

## Product datasheet for **TA329766**

### Sgms1 Rabbit Polyclonal Antibody

#### Product data:

Product Type:	Primary Antibodies
Applications:	WB
Recommended Dilution:	WB
Reactivity:	Mouse
Host:	Rabbit
Isotype:	IgG
Clonality:	Polyclonal
Immunogen:	The immunogen for Anti-Sgms1 antibody is: synthetic peptide directed towards the middle region of Mouse Sgms1. Synthetic peptide located within the following region: LTTVMISVHERVPPKEVQPPLPDTFFDHFNRVQWAFSICEINGMILVGL
Formulation:	Liquid. Purified antibody supplied in 1x PBS buffer with 0.09% (w/v) sodium azide and 2% sucrose. <i>Note that this product is shipped as lyophilized powder to China customers.</i>
Conjugation:	Unconjugated
Storage:	Store at -20°C as received.
Stability:	Stable for 12 months from date of receipt.
Predicted Protein Size:	46 kDa
Gene Name:	sphingomyelin synthase 1
Database Link:	<a href="#">NP_001161997</a> <a href="#">Entrez Gene 208449 Mouse</a> <a href="#">Q8VCQ6</a>



[View online »](#)

**Background:**

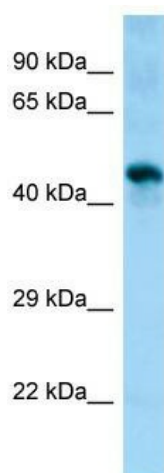
Bidirectional lipid cholinephosphotransferase is capable of converting phosphatidylcholine (PC) and ceramide to sphingomyelin (SM) and diacylglycerol (DAG) and vice versa. Direction is dependent on the relative concentrations of DAG and ceramide as phosphocholine acceptors. Sgms1 directly and specifically recognizes the choline head group on the substrate. It also requires two fatty chains on the choline-P donor molecule in order to be recognized efficiently as a substrate. Sgms1 does not function strictly as a SM synthase and suppresses BAX-mediated apoptosis and also prevents cell death in response to stimuli such as hydrogen peroxide, osmotic stress, elevated temperature and exogenously supplied sphingolipids. Sgms1 may protect against cell death by reversing the stress-inducible increase in levels of proapoptotic ceramide.

**Synonyms:**

hmob33; MGC17342; MOB; MOB1; SMS1; TMEM23

**Note:**

Immunogen sequence homology: Dog: 100%; Pig: 100%; Rat: 100%; Horse: 100%; Human: 100%; Mouse: 100%; Bovine: 100%; Rabbit: 100%; Guinea pig: 100%; Zebrafish: 77%

**Product images:**

WB Suggested Anti-Sgms1 Antibody; Titration: 1.0 ug/ml; Positive Control: Mouse Muscle