

Product datasheet for **TA329765**

Spingomyelin Synthase 1 (SGMS1) Rabbit Polyclonal Antibody

Product data:

Product Type:	Primary Antibodies
Applications:	WB
Recommended Dilution:	WB
Reactivity:	Human
Host:	Rabbit
Isotype:	IgG
Clonality:	Polyclonal
Immunogen:	The immunogen for anti-SGMS1 antibody: synthetic peptide directed towards the middle region of human SGMS1. Synthetic peptide located within the following region: SCFVLTVMISVHERVPPKEVQPPLPDTFFDHFNRVQWAFSICEINGMI
Formulation:	Liquid. Purified antibody supplied in 1x PBS buffer with 0.09% (w/v) sodium azide and 2% sucrose. <i>Note that this product is shipped as lyophilized powder to China customers.</i>
Conjugation:	Unconjugated
Storage:	Store at -20°C as received.
Stability:	Stable for 12 months from date of receipt.
Predicted Protein Size:	48 kDa
Gene Name:	sphingomyelin synthase 1
Database Link:	NP_671512 Entrez Gene 259230 Human Q86VZ5
Background:	SGMS1 is predicted to be a five-pass transmembrane protein. This gene may be predominately expressed in brain. The protein encoded by this gene is predicted to be a five-pass transmembrane protein. This gene may be predominately expressed in brain. Publication Note: This RefSeq record includes a subset of the publications that are available for this gene. Please see the Entrez Gene record to access additional publications.
Synonyms:	hmob33; MOB; MOB1; SMS1; TMEM23



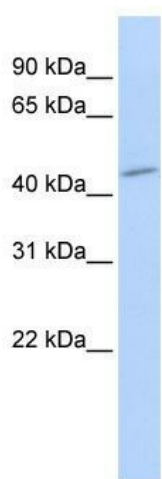
[View online »](#)

Note: Immunogen sequence homology: Dog: 100%; Pig: 100%; Rat: 100%; Horse: 100%; Human: 100%; Mouse: 100%; Bovine: 100%; Rabbit: 100%; Guinea pig: 100%; Zebrafish: 77%

Protein Families: Transmembrane

Protein Pathways: Metabolic pathways, Sphingolipid metabolism

Product images:



WB Suggested Anti-SGMS1 Antibody Titration:
0.2-1 ug/ml; ELISA Titer: 1:62500; Positive Control:
Hela cell lysate