

## Product datasheet for **TA329764**

### Apbb1 Rabbit Polyclonal Antibody

#### Product data:

Product Type:	Primary Antibodies
Applications:	WB
Recommended Dilution:	WB
Reactivity:	Mouse
Host:	Rabbit
Isotype:	IgG
Clonality:	Polyclonal
Immunogen:	The immunogen for anti-Apbb1 antibody: synthetic peptide corresponding to a region of Mouse. Synthetic peptide located within the following region: DGPREHSKASLLFGMRNSAASDEDSSWATLSQGSPSYGSPEDTDSFWNP
Formulation:	Liquid. Purified antibody supplied in 1x PBS buffer with 0.09% (w/v) sodium azide and 2% sucrose. <i>Note that this product is shipped as lyophilized powder to China customers.</i>
Conjugation:	Unconjugated
Storage:	Store at -20°C as received.
Stability:	Stable for 12 months from date of receipt.
Predicted Protein Size:	78 kDa
Gene Name:	amyloid beta (A4) precursor protein-binding, family B, member 1
Database Link:	<a href="#">NP_033815</a> <a href="#">Entrez Gene 11785 Mouse</a> <a href="#">Q9QXJ1</a>



[View online »](#)

**Background:**

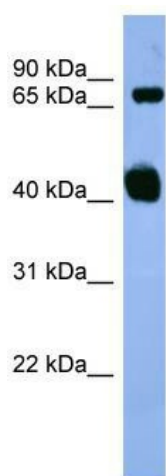
Apbb1 is an adapter protein that forms a transcriptionally active complex with the gamma-secretase-derived amyloid precursor protein (APP) intracellular domain. Apbb1 plays a central role in the response to DNA damage by translocating to the nucleus and inducing apoptosis. Apbb1 may act by specifically recognizing and binding histone H2AX phosphorylated on 'Tyr-142' (H2AXY142ph) at double-strand breaks (DSBs), recruiting other pro-apoptosis factors such as MAPK8/JNK1. Apbb1 is required for histone H4 acetylation at double-strand breaks (DSBs). Its ability to specifically bind modified histones and chromatin modifying enzymes such as KAT5/TIP60, probably explains its transcription activation activity. Apbb1 functions in association with TSHZ3, SET and HDAC factors as a transcriptional repressor, that inhibits the expression of CASP4. Apbb1 is associated with chromatin in a region surrounding the CASP4 transcriptional start site(s).

**Synonyms:**

FE65; MGC:9072; RIR

**Note:**

Immunogen sequence homology: Dog: 100%; Pig: 100%; Rat: 100%; Human: 100%; Mouse: 100%; Bovine: 100%; Rabbit: 100%; Guinea pig: 100%; Horse: 93%

**Product images:**

WB Suggested Anti-Apbb1 Antibody Titration: 0.2-1 ug/ml; ELISA Titer: 1:1562500; Positive Control: Mouse Heart