

Product datasheet for TA329763

RASGEF1A Rabbit Polyclonal Antibody

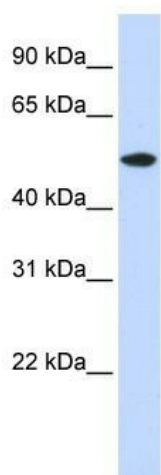
Product data:

Product Type:	Primary Antibodies
Applications:	WB
Recommended Dilution:	WB
Reactivity:	Human
Host:	Rabbit
Isotype:	IgG
Clonality:	Polyclonal
Immunogen:	The immunogen for anti-RASGEF1A antibody: synthetic peptide directed towards the N terminal of human RASGEF1A. Synthetic peptide located within the following region: TFLSSRVFMPPHDLLARVGQICVEQKQQLQLEAGPEKAKLKSFSKIVQLL
Formulation:	Liquid. Purified antibody supplied in 1x PBS buffer with 0.09% (w/v) sodium azide and 2% sucrose.
Conjugation:	Unconjugated
Storage:	Store at -20°C as received.
Stability:	Stable for 12 months from date of receipt.
Predicted Protein Size:	54 kDa
Gene Name:	RasGEF domain family member 1A
Database Link:	NP_660356 Entrez Gene 221002 Human Q8N9B8
Background:	RASGEF1A is the guanine nucleotide exchange factor (GEF) for KRAS, HRAS, and NRAS (in vitro). It plays a role in cell migration.
Synonyms:	CG4853



Note: Immunogen sequence homology: Human: 100%; Pig: 93%; Rat: 93%; Mouse: 93%; Guinea pig: 93%; Bovine: 86%; Horse: 79%

Product images:



WB Suggested Anti-RASGEF1A Antibody
Titration: 0.2-1 ug/ml; ELISA Titer: 1:62500;
Positive Control: 293T cell lysate