

Product datasheet for **TA329762**

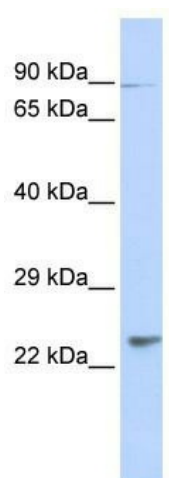
LRTOMT Rabbit Polyclonal Antibody

Product data:

Product Type:	Primary Antibodies
Applications:	WB
Recommended Dilution:	WB
Reactivity:	Human
Host:	Rabbit
Isotype:	IgG
Clonality:	Polyclonal
Immunogen:	The immunogen for anti-LRRC51 antibody: synthetic peptide directed towards the N terminal of human LRRC51. Synthetic peptide located within the following region: MNKRDYMNTSVQEPPLDYSFRSIHVIQDLVNEEPRTGLRPLKRSKSGKSL
Formulation:	Liquid. Purified antibody supplied in 1x PBS buffer with 0.09% (w/v) sodium azide and 2% sucrose.
Conjugation:	Unconjugated
Storage:	Store at -20°C as received.
Stability:	Stable for 12 months from date of receipt.
Predicted Protein Size:	22 kDa
Gene Name:	leucine rich transmembrane and O-methyltransferase domain containing
Database Link:	NP_660352 Entrez Gene 220074 Human Q96E66
Background:	The exact function of LRRC51 remains unknown.
Synonyms:	CFAP111; DFNB63; LRRC51
Note:	Immunogen sequence homology: Dog: 100%; Pig: 100%; Rat: 100%; Human: 100%; Mouse: 100%; Bovine: 100%; Guinea pig: 100%; Horse: 86%; Rabbit: 79%



[View online »](#)

Product images:

WB Suggested Anti-LRRC51 Antibody Titration:
0.2-1 ug/ml; ELISA Titer: 1:312500; Positive
Control: Human fetal heart