

Product datasheet for **TA329757**

NEUROD1 Rabbit Polyclonal Antibody

Product data:

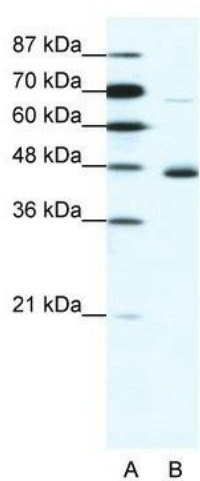
Product Type:	Primary Antibodies
Applications:	WB
Recommended Dilution:	WB
Reactivity:	Human
Host:	Rabbit
Isotype:	IgG
Clonality:	Polyclonal
Immunogen:	The immunogen for anti-NEUROD1 antibody: synthetic peptide directed towards the N terminal of human NEUROD1. Synthetic peptide located within the following region: MTKSYSEGLMGEPQPGPPSWTDECLSSQDEEHEADKKEDDLEAMNAEE
Formulation:	Liquid. Purified antibody supplied in 1x PBS buffer with 0.09% (w/v) sodium azide and 2% sucrose. <i>Note that this product is shipped as lyophilized powder to China customers.</i>
Conjugation:	Unconjugated
Storage:	Store at -20°C as received.
Stability:	Stable for 12 months from date of receipt.
Predicted Protein Size:	40 kDa
Gene Name:	neuronal differentiation 1
Database Link:	NP_002491 Entrez Gene 4760 Human Q13562
Background:	NeuroD1 is a member of the bHLH family that involves in neuroendocrine differentiation.
Synonyms:	BETA2; BHF-1; bHLHa3; MODY6; NEUROD
Note:	Immunogen sequence homology: Rat: 100%; Horse: 100%; Human: 100%; Mouse: 100%; Pig: 93%; Bovine: 93%; Guinea pig: 93%
Protein Families:	Adult stem cells, Druggable Genome, Embryonic stem cells, ES Cell Differentiation/IPS, Transcription Factors



[View online »](#)

Protein Pathways: Maturity onset diabetes of the young

Product images:



WB Suggested Anti-NEUROD1 Antibody Titration:
1.25ug/ml; ELISA Titer: 1:62500; Positive Control:
Jurkat cell lysate