

Product datasheet for **TA329754**

MTF1 Rabbit Polyclonal Antibody

Product data:

Product Type:	Primary Antibodies
Applications:	WB
Recommended Dilution:	WB
Reactivity:	Human
Host:	Rabbit
Isotype:	IgG
Clonality:	Polyclonal
Immunogen:	The immunogen for anti-MTF1 antibody: synthetic peptide directed towards the C terminal of human MTF1. Synthetic peptide located within the following region: QSSLVMGEQNLQWILNGATSSPQNQEIQQASKVEKVFFTTAVPVASSPG
Formulation:	Liquid. Purified antibody supplied in 1x PBS buffer with 0.09% (w/v) sodium azide and 2% sucrose.
Conjugation:	Unconjugated
Storage:	Store at -20°C as received.
Stability:	Stable for 12 months from date of receipt.
Predicted Protein Size:	81 kDa
Gene Name:	metal-regulatory transcription factor 1
Database Link:	NP_005946 Entrez Gene 4520 Human Q14872
Background:	The zinc finger transcription factor MTF-1 (metal-responsive transcription factor-1) is conserved from insects to vertebrates. The major role of MTF-1 in both organisms is to control the transcription of genes involved in the homeostasis and detoxification of heavy metal ions such as Cu ²⁺ , Zn ²⁺ and Cd ²⁺ . In mammals, MTF-1 serves at least two additional roles. First, targeted disruption of the MTF-1 gene results in death at embryonic day 14 due to liver degeneration, revealing a stage-specific developmental role. Second, under hypoxic-anoxic stress, MTF-1 helps to activate the transcription of the gene placental growth factor (PIGF), an angiogenic protein.



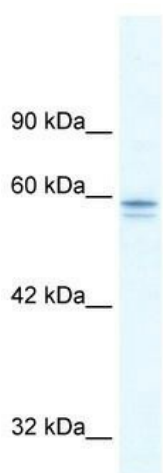
[View online »](#)

Synonyms: MTF-1; ZRF

Note: Immunogen sequence homology: Dog: 100%; Rat: 100%; Horse: 100%; Human: 100%; Mouse: 100%; Bovine: 100%; Pig: 93%; Rabbit: 93%; Guinea pig: 93%

Protein Families: Transcription Factors

Product images:



WB Suggested Anti-MTF1 Antibody Titration: 5.0 ug/ml; ELISA Titer: 1:2500; Positive Control: HepG2 cell lysate MTF1 is supported by BioGPS gene expression data to be expressed in HepG2