

Product datasheet for **TA329753**

ASCL2 Rabbit Polyclonal Antibody

Product data:

Product Type:	Primary Antibodies
Applications:	WB
Recommended Dilution:	WB
Reactivity:	Human
Host:	Rabbit
Isotype:	IgG
Clonality:	Polyclonal
Immunogen:	The immunogen for anti-ASCL2 antibody: synthetic peptide directed towards the middle region of human ASCL2. Synthetic peptide located within the following region: QALRQHVPHGGASKKLSKVETLRSAVEYIRALQRLLAEHDAVRNALAGGL
Formulation:	Liquid. Purified antibody supplied in 1x PBS buffer with 0.09% (w/v) sodium azide and 2% sucrose. <i>Note that this product is shipped as lyophilized powder to China customers.</i>
Conjugation:	Unconjugated
Storage:	Store at -20°C as received.
Stability:	Stable for 12 months from date of receipt.
Predicted Protein Size:	20 kDa
Gene Name:	achaete-scute family bHLH transcription factor 2
Database Link:	NP_005161 Entrez Gene 430 Human Q99929
Background:	AS-C proteins are involved in the determination of the neuronal precursors in the peripheral nervous system and the central nervous system. This gene is a member of the basic helix-loop-helix (BHLH) family of transcription factors. It activates transcription by binding to the E box (5'-CANNTG-3'). Dimerization with other BHLH proteins is required for efficient DNA binding. Involved in the determination of the neuronal precursors in the peripheral nervous system and the central nervous system. PRIMARYREFSEQ_SPAN PRIMARY_IDENTIFIER PRIMARY_SPAN COMP 1-1649 BC028140.1 1-1649 1650-1864 BC057801.1 1286-1500



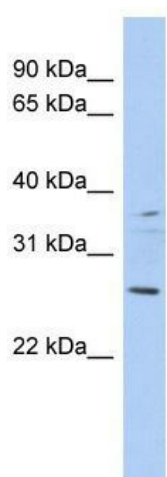
[View online »](#)

Synonyms: ASH2; bHLHa45; HASH2; MASH2

Note: Immunogen sequence homology: Dog: 100%; Pig: 100%; Rat: 100%; Human: 100%; Bovine: 100%; Guinea pig: 100%; Mouse: 92%; Rabbit: 77%; Zebrafish: 77%

Protein Families: Druggable Genome, Transcription Factors

Product images:



WB Suggested Anti-ASCL2 Antibody Titration: 0.2-1 ug/ml; ELISA Titer: 1:312500; Positive Control: DU145 cell lysate