

## Product datasheet for **TA329752**

### Aff1 Rabbit Polyclonal Antibody

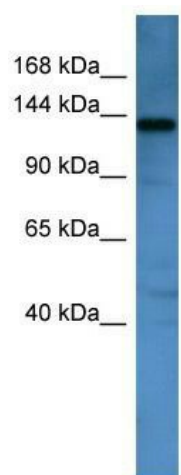
#### Product data:

Product Type:	Primary Antibodies
Applications:	WB
Recommended Dilution:	WB
Reactivity:	Mouse
Host:	Rabbit
Isotype:	IgG
Clonality:	Polyclonal
Immunogen:	The immunogen for anti-Aff1 antibody: synthetic peptide corresponding to a region of Mouse. Synthetic peptide located within the following region: MAAHSSLYNEDRNLLRIREKERRNQEAHQEKEAFPEKAPLFPEPYKTAKG
Formulation:	Liquid. Purified antibody supplied in 1x PBS buffer with 0.09% (w/v) sodium azide and 2% sucrose. <i>Note that this product is shipped as lyophilized powder to China customers.</i>
Conjugation:	Unconjugated
Storage:	Store at -20°C as received.
Stability:	Stable for 12 months from date of receipt.
Predicted Protein Size:	132 kDa
Gene Name:	AF4/FMR2 family, member 1
Database Link:	<a href="#">NP_598680</a> <a href="#">Entrez Gene 17355 Mouse</a>
Background:	The function of Aff1 remains unknown.
Synonyms:	AF-4; AF4; FEL; MGC134969; MLLT2; PBM1
Note:	Immunogen sequence homology: Rat: 100%; Horse: 100%; Human: 100%; Mouse: 100%; Dog: 92%; Pig: 92%; Bovine: 85%; Rabbit: 85%



[View online »](#)

## Product images:



WB Suggested Anti-Aff1 Antibody Titration: 0.2-1 ug/ml; ELISA Titer: 1:62500; Positive Control: Mouse Kidney