

## Product datasheet for TA329751

### MEIS1 Rabbit Polyclonal Antibody

#### Product data:

Product Type:	Primary Antibodies
Applications:	WB
Recommended Dilution:	WB
Reactivity:	Human
Host:	Rabbit
Isotype:	IgG
Clonality:	Polyclonal
Immunogen:	The immunogen for anti-MEIS1 antibody: synthetic peptide directed towards the middle region of human MEIS1. Synthetic peptide located within the following region: GKMPIDLVIDDREGGSKSDSEIDITRSANLTDQPSWNRDHDDTASTRSGGT
Formulation:	Liquid. Purified antibody supplied in 1x PBS buffer with 0.09% (w/v) sodium azide and 2% sucrose. <i>Note that this product is shipped as lyophilized powder to China customers.</i>
Purification:	Affinity Purified
Conjugation:	Unconjugated
Storage:	Store at -20°C as received.
Stability:	Stable for 12 months from date of receipt.
Predicted Protein Size:	43 kDa
Gene Name:	Meis homeobox 1
Database Link:	<a href="#">NP_002389</a> <a href="#">Entrez Gene 4211 Human</a> <a href="#">O00470</a>
Background:	Homeobox genes, of which the most well-characterized category is represented by the HOX genes, play a crucial role in normal development. In addition, several homeoproteins are involved in neoplasia. This gene encodes a homeobox protein belonging to the TALE ('three amino acid loop extension') family of homeodomain-containing proteins. [provided by RefSeq, Jul 2008]
Synonyms:	MGC43380

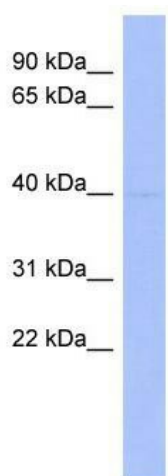


[View online »](#)

**Note:** Immunogen sequence homology: Dog: 100%; Pig: 100%; Rat: 100%; Horse: 100%; Human: 100%; Bovine: 100%; Rabbit: 100%; Guinea pig: 100%; Mouse: 93%; Zebrafish: 91%

**Protein Families:** Transcription Factors

**Product images:**



WB Suggested Anti-MEIS1 Antibody Titration: 0.2-1 ug/ml; ELISA Titer: 1:312500; Positive Control: Human Lung