

Product datasheet for **TA329750**

Pyrin (MEFV) Rabbit Polyclonal Antibody

Product data:

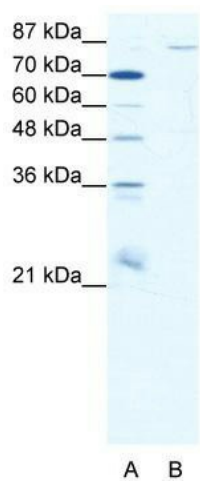
Product Type:	Primary Antibodies
Applications:	WB
Recommended Dilution:	WB
Reactivity:	Human
Host:	Rabbit
Isotype:	IgG
Clonality:	Polyclonal
Immunogen:	The immunogen for anti-MEFV antibody: synthetic peptide directed towards the N terminal of human MEFV. Synthetic peptide located within the following region: TPSDHLLSTLEELVPYDFEKFKLQNTSVQKEHSRIPRSQIQRRARPVKM
Formulation:	Liquid. Purified antibody supplied in 1x PBS buffer with 0.09% (w/v) sodium azide and 2% sucrose.
Conjugation:	Unconjugated
Storage:	Store at -20°C as received.
Stability:	Stable for 12 months from date of receipt.
Predicted Protein Size:	86 kDa
Gene Name:	Mediterranean fever
Database Link:	NP_000234 Entrez Gene 4210 Human O15553
Background:	MEFV was identified as the gene that when mutated causes Mediterranean fever, a hereditary periodic fever syndrome. MEFV is expressed in granulocytes and myeloid bone marrow precursors.
Synonyms:	FMF; MEF; TRIM20
Note:	Immunogen sequence homology: Dog: 100%; Pig: 100%; Rat: 100%; Human: 100%; Mouse: 100%; Bovine: 100%; Rabbit: 100%; Guinea pig: 100%; Horse: 93%
Protein Families:	Druggable Genome



[View online »](#)

Protein Pathways: NOD-like receptor signaling pathway

Product images:



WB Suggested Anti-MEFV Antibody Titration:
0.625 ug/ml; ELISA Titer: 1:62500; Positive
Control: HepG2 cell lysate