

Product datasheet for **TA329747**

MADH7 (SMAD7) Rabbit Polyclonal Antibody

Product data:

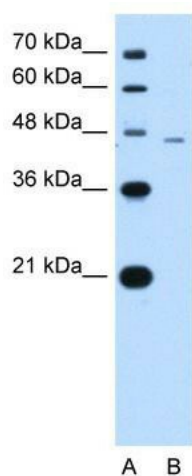
Product Type:	Primary Antibodies
Applications:	WB
Recommended Dilution:	WB
Reactivity:	Human
Host:	Rabbit
Isotype:	IgG
Clonality:	Polyclonal
Immunogen:	The immunogen for anti-SMAD7 antibody: synthetic peptide directed towards the N terminal of human SMAD7. Synthetic peptide located within the following region: LVRRLWRSRAPGGEDDEEGAGGGGGGGELRGEGATDSRAHGAGGGGGPGRA
Formulation:	Liquid. Purified antibody supplied in 1x PBS buffer with 0.09% (w/v) sodium azide and 2% sucrose. <i>Note that this product is shipped as lyophilized powder to China customers.</i>
Conjugation:	Unconjugated
Storage:	Store at -20°C as received.
Stability:	Stable for 12 months from date of receipt.
Predicted Protein Size:	46 kDa
Gene Name:	SMAD family member 7
Database Link:	NP_005895 Entrez Gene 4092 Human O15105
Background:	Smad7 acts to functionally inactivate RB and de-repress E2F without blocking the activation of TbetaRI and the nuclear translocation of Smad2/3, allowing TGF-beta1 to exert effects in a cancer cell that is resistant to TGF-beta1-mediated growth inhibition.
Synonyms:	CRCS3; MADH7; MADH8
Note:	Immunogen sequence homology: Human: 100%; Dog: 93%; Pig: 93%; Bovine: 93%; Rabbit: 93%; Mouse: 92%; Rat: 85%
Protein Families:	Druggable Genome, Transcription Factors



[View online »](#)

Protein Pathways: TGF-beta signaling pathway

Product images:



WB Suggested Anti-SMAD7 Antibody Titration: 1.0 ug/ml; Positive Control: Human Lung