

## Product datasheet for **TA329746**

### **MADH7 (SMAD7) Rabbit Polyclonal Antibody**

#### **Product data:**

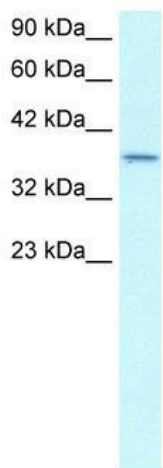
|                                |  |
|--------------------------------|--|
| <b>Product Type:</b>           | Primary Antibodies   |
| <b>Applications:</b>           | WB   |
| <b>Recommended Dilution:</b>   | WB   |
| <b>Reactivity:</b>             | Human  |
| <b>Host:</b>                   | Rabbit   |
| <b>Isotype:</b>                | IgG  |
| <b>Clonality:</b>              | Polyclonal   |
| <b>Immunogen:</b>              | The immunogen for anti-SMAD7 antibody: synthetic peptide directed towards the N terminal of human SMAD7. Synthetic peptide located within the following region:<br>EEEGAGGGGGGGELRGEGATDSRAHGAGGGGPGRAGCCLGKAVRGAKGHH  |
| <b>Formulation:</b>            | Liquid. Purified antibody supplied in 1x PBS buffer with 0.09% (w/v) sodium azide and 2% sucrose.<br><i>Note that this product is shipped as lyophilized powder to China customers.</i>  |
| <b>Conjugation:</b>            | Unconjugated   |
| <b>Storage:</b>                | Store at -20°C as received.  |
| <b>Stability:</b>              | Stable for 12 months from date of receipt.   |
| <b>Predicted Protein Size:</b> | 46 kDa   |
| <b>Gene Name:</b>              | SMAD family member 7   |
| <b>Database Link:</b>          | <a href="#">NP_005895</a><br><a href="#">Entrez Gene 4092 Human O15105</a>   |
| <b>Background:</b>             | Smad7 acts to functionally inactivate RB and de-repress E2F without blocking the activation of TbetaRI and the nuclear translocation of Smad2/3, allowing TGF-beta1 to exert effects in a cancer cell that is resistant to TGF-beta1-mediated growth inhibition. |
| <b>Synonyms:</b>               | CRCS3; MADH7; MADH8  |
| <b>Note:</b>                   | Immunogen sequence homology: Human: 100%; Dog: 93%; Pig: 93%; Bovine: 93%; Rabbit: 93%; Mouse: 92%; Rat: 85%   |
| <b>Protein Families:</b>       | Druggable Genome, Transcription Factors  |



[View online »](#)

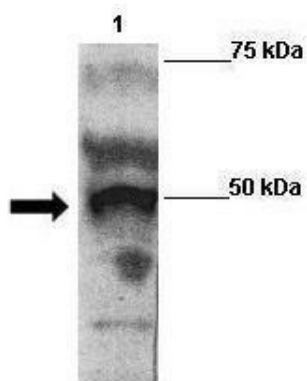
Protein Pathways: TGF-beta signaling pathway

**Product images:**



WB Suggested Antibody Titration: 0.2-1 ug/ml;  
Positive Control: Lung

**SMAD7**



WB Suggested Anti-SMAD7 Antibody ; Positive Control: Lane 1: 2ug Flag-SMAD7 transfected 293 extracts; Primary Antibody Dilution : 1:500; Secondary Antibody : Goat anti-rabbit-HRP; Secondary Antibody Dilution : 1:5000; Submitted by: Anonymous