

Product datasheet for **TA329745**

SMAD6 Rabbit Polyclonal Antibody

Product data:

Product Type:	Primary Antibodies
Applications:	WB
Recommended Dilution:	WB
Reactivity:	Human
Host:	Rabbit
Isotype:	IgG
Clonality:	Polyclonal
Immunogen:	The immunogen for Anti-SMAD6 antibody is: synthetic peptide directed towards the N-terminal region of Human SMAD6. Synthetic peptide located within the following region: RRLWRSRVVPDREEGSGGGGGGDEDEDGSLGSRAEPAPRAREGGGCRSEV
Formulation:	Liquid. Purified antibody supplied in 1x PBS buffer with 0.09% (w/v) sodium azide and 2% sucrose. <i>Note that this product is shipped as lyophilized powder to China customers.</i>
Conjugation:	Unconjugated
Storage:	Store at -20°C as received.
Stability:	Stable for 12 months from date of receipt.
Predicted Protein Size:	37 kDa
Gene Name:	SMAD family member 6
Database Link:	NP_001136333 Entrez Gene 4091 Human O43541
Background:	The protein encoded by this gene belongs to the SMAD family of proteins, which are related to Drosophila 'mothers against decapentaplegic' (Mad) and C. elegans Sma. SMAD proteins are signal transducers and transcriptional modulators that mediate multiple signaling pathways. This protein functions in the negative regulation of BMP and TGF-beta/activin-signalling. Multiple transcript variants encoding different isoforms have been found for this gene.
Synonyms:	AOVD2; HsT17432; MADH6; MADH7



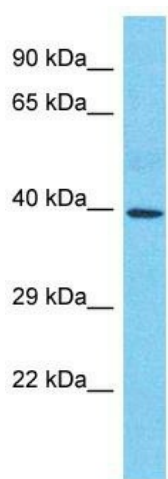
[View online »](#)

Note: Immunogen sequence homology: Rat: 100%; Human: 100%; Mouse: 93%; Pig: 92%; Bovine: 92%; Guinea pig: 85%

Protein Families: Cancer stem cells, Druggable Genome, ES Cell Differentiation/IPS, Transcription Factors

Protein Pathways: TGF-beta signaling pathway

Product images:



Host: Rabbit

Target Name: SMAD6

Sample Tissue: Thymus Tumor Lysate

Antibody Dilution: 1.0 μ g/ml

Host: Rabbit; Target Name: SMAD6; Sample Tissue: Thymus Tumor lysates; Antibody Dilution: 1.0ug/ml