

## Product datasheet for **TA329743**

### SMAD5 Rabbit Polyclonal Antibody

#### Product data:

Product Type:	Primary Antibodies
Applications:	WB
Recommended Dilution:	WB
Reactivity:	Human, Rat
Host:	Rabbit
Isotype:	IgG
Clonality:	Polyclonal
Immunogen:	The immunogen for anti-SMAD5 antibody: synthetic peptide directed towards the middle region of human SMAD5. Synthetic peptide located within the following region: YPPSPASSTYPNSPASSGPGSPFQLPADTPPPAYMPPDDQMGQDNSQPMD
Formulation:	Liquid. Purified antibody supplied in 1x PBS buffer with 0.09% (w/v) sodium azide and 2% sucrose. <i>Note that this product is shipped as lyophilized powder to China customers.</i>
Conjugation:	Unconjugated
Storage:	Store at -20°C as received.
Stability:	Stable for 12 months from date of receipt.
Predicted Protein Size:	51 kDa
Gene Name:	SMAD family member 5
Database Link:	<a href="#">NP_005894</a> <a href="#">Entrez Gene 59328 Rat</a> <a href="#">Entrez Gene 4090 Human</a> <a href="#">Q99717</a>
Background:	SMAD5 undergoes copy number gain and increased expression, rather than loss of expression, and therefore does not act as a tumor-suppressor gene in hepatocellular carcinoma. Up-regulated Smad5 mediates apoptosis of gastric epithelial cells induced by Helicobacter pylori infection.
Synonyms:	DWFC; JV5-1; MADH5



[View online »](#)

**Note:** Immunogen sequence homology: Dog: 100%; Pig: 100%; Rat: 100%; Horse: 100%; Human: 100%; Mouse: 100%; Bovine: 100%; Rabbit: 100%; Guinea pig: 100%; Sheep: 93%; Zebrafish: 93%

**Protein Families:** Cancer stem cells, Druggable Genome, ES Cell Differentiation/IPS, Stem cell relevant signaling - JAK/STAT signaling pathway, Stem cell relevant signaling - TGFb/BMP signaling pathway, Transcription Factors

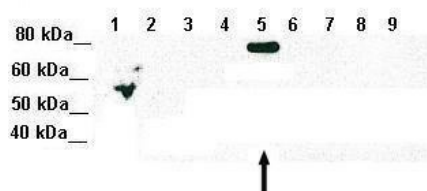
**Protein Pathways:** TGF-beta signaling pathway

## Product images:



SMAD1

WB Suggested Anti-SMAD5 Antibody Titration:  
0.2-1 ug/ml; ELISA Titer: 1:62500; Positive Control:  
HepG2 cell lysate



Lanes: Lane 1: 5ug of transfected 293T lysate (SMAD1); Lane 1: 5ug of transfected 293T lysate (SMAD2); Lane 1: 5ug of transfected 293T lysate (SMAD3); Lane 1: 5ug of transfected 293T lysate (SMAD4); Lane 1: 5ug of transfected 293T lysate (SMAD5); Lane 1:

See Immunoblot 2 Data and Customer Feedback for more information