

Product datasheet for **TA329742**

SMAD4 Rabbit Polyclonal Antibody

Product data:

Product Type:	Primary Antibodies
Applications:	WB
Recommended Dilution:	WB
Reactivity:	Human
Host:	Rabbit
Isotype:	IgG
Clonality:	Polyclonal
Immunogen:	The immunogen for anti-SMAD4 antibody: synthetic peptide directed towards the middle region of human SMAD4. Synthetic peptide located within the following region: NIPVASTSQPASILGGSHSEGLLQIASGPQPGQQQNGFTGQPATYHHNST
Formulation:	Liquid. Purified antibody supplied in 1x PBS buffer with 0.09% (w/v) sodium azide and 2% sucrose. <i>Note that this product is shipped as lyophilized powder to China customers.</i>
Conjugation:	Unconjugated
Storage:	Store at -20°C as received.
Stability:	Stable for 12 months from date of receipt.
Predicted Protein Size:	60 kDa
Gene Name:	SMAD family member 4
Database Link:	NP_005350 Entrez Gene 4089 Human Q13485
Background:	SMAD4 is one of the Smad family members, which are essential intracellular signalling components of the transforming growth factor-beta (TGF-beta) superfamily. Smad2 and Smad3 are structurally highly similar and mediate TGF-beta signals. Smad4 is distantly related to Smads 2 and 3, and forms a heteromeric complex with Smad2 after TGF-beta or activin stimulation. TGF-beta induces heteromeric complexes of Smads 2, 3 and 4, and their concomitant translocation to the nucleus, which is required for efficient TGF-beta signal transduction



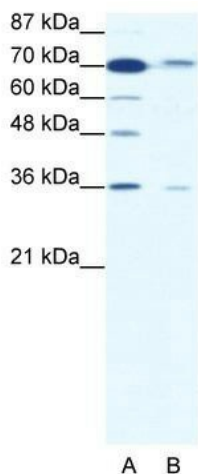
[View online »](#)

Synonyms: DPC4; JIP; MADH4; MYHRS

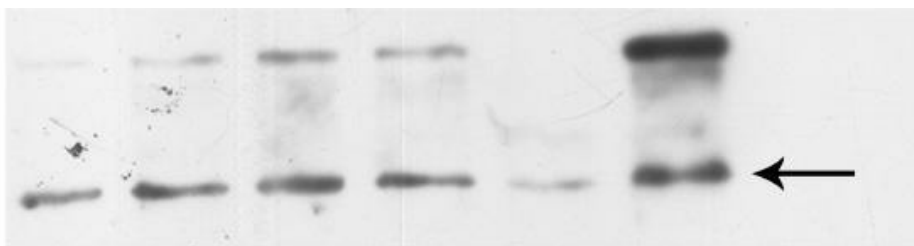
Note: Immunogen sequence homology: Pig: 100%; Rat: 100%; Goat: 100%; Horse: 100%; Human: 100%; Sheep: 100%; Bovine: 100%; Rabbit: 100%; Guinea pig: 100%; Dog: 92%; Mouse: 92%

Protein Families: Druggable Genome, Transcription Factors

Protein Pathways: Adherens junction, Cell cycle, Chronic myeloid leukemia, Colorectal cancer, Pancreatic cancer, Pathways in cancer, TGF-beta signaling pathway, Wnt signaling pathway

Product images:


WB Suggested Anti-SMAD4 Antibody Titration:
1.25 ug/ml; ELISA Titer: 1:312500; Positive
Control: HepG2 cell lysate

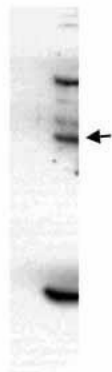


Sample Type: Human nuclear cell extracts (30 ug); Primary Dilution: 1:1000; Secondary Antibody: anti-Rabbit HRP; Secondary Dilution: 1:20000; Image Submitted By: Katarina Luciakova; Cancer Research Institute See Customer Feedback tab for detailed informat

See Immunoblot 2 Data for more information.

SMAD4

130 kDa →
95 kDa →
72 kDa →
55 kDa →
43 kDa →
34 kDa →
26 kDa →



SMAD4 antibody - middle region validated by WB using U2OS nuclear extracts

See Immunoblot 2 Data for more information.