

Product datasheet for **TA329741**

BMAL1 (ARNTL) Rabbit Polyclonal Antibody

Product data:

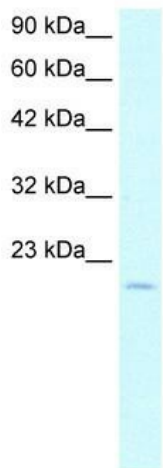
Product Type:	Primary Antibodies
Applications:	IHC, WB
Recommended Dilution:	WB, IHC
Reactivity:	Human, Mouse
Host:	Rabbit
Isotype:	IgG
Clonality:	Polyclonal
Immunogen:	The immunogen for anti-ARNTL antibody: synthetic peptide directed towards the N terminal of human ARNTL. Synthetic peptide located within the following region: TDYQESMDTDKDDPHGRLEYTEHQGRIKNAREAHSQIEKRRRDKMNSF
Formulation:	Liquid. Purified antibody supplied in 1x PBS buffer with 0.09% (w/v) sodium azide and 2% sucrose. <i>Note that this product is shipped as lyophilized powder to China customers.</i>
Conjugation:	Unconjugated
Storage:	Store at -20°C as received.
Stability:	Stable for 12 months from date of receipt.
Predicted Protein Size:	25 kDa
Gene Name:	aryl hydrocarbon receptor nuclear translocator like
Database Link:	NP_001169 Entrez Gene 11865 Mouse Entrez Gene 406 Human O00327
Background:	ARNTL is a general dimerization partner for a subset of the basic-helix-loop-helix (bHLH)-PER-ARNT-SIM (PAS) superfamily of transcriptional regulators.
Synonyms:	bHLHe5; BMAL1; BMAL1c; JAP3; MOP3; PASD3; TIC
Note:	Immunogen sequence homology: Pig: 100%; Rat: 100%; Horse: 100%; Human: 100%; Sheep: 100%; Bovine: 100%; Guinea pig: 100%; Dog: 92%; Mouse: 92%; Rabbit: 92%
Protein Families:	Druggable Genome, Transcription Factors



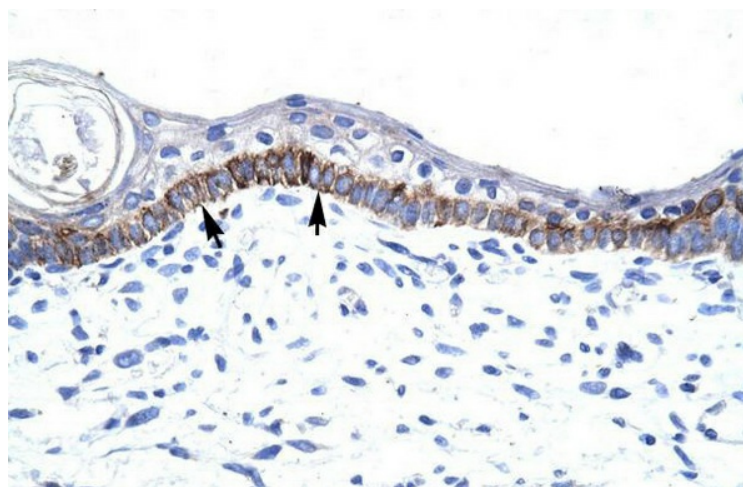
[View online »](#)

Protein Pathways: Circadian rhythm - mammal

Product images:



WB Suggested Anti-ARNTL Antibody Titration: 5.0 ug/ml; Positive Control: HepG2 cell lysate



Human Skin