

Product datasheet for **TA329740**

LMX1A Rabbit Polyclonal Antibody

Product data:

Product Type:	Primary Antibodies
Applications:	IHC, WB
Recommended Dilution:	WB, IHC
Reactivity:	Human
Host:	Rabbit
Isotype:	IgG
Clonality:	Polyclonal
Immunogen:	The immunogen for anti-LMX1A antibody: synthetic peptide directed towards the middle region of human LMX1A. Synthetic peptide located within the following region: QNQRAKMKKLARRQQQQDQQTQRLSSAQTNGGGSAGMEGIMNPYAL
Formulation:	Liquid. Purified antibody supplied in 1x PBS buffer with 0.09% (w/v) sodium azide and 2% sucrose. <i>Note that this product is shipped as lyophilized powder to China customers.</i>
Conjugation:	Unconjugated
Storage:	Store at -20°C as received.
Stability:	Stable for 12 months from date of receipt.
Predicted Protein Size:	43 kDa
Gene Name:	LIM homeobox transcription factor 1 alpha
Database Link:	NP_796372 Entrez Gene 4009 Human Q8TE12
Background:	This gene encodes a homeodomain and LIM-domain containing protein. The encoded protein is a transcription factor that acts as a positive regulator of insulin gene transcription. This gene also plays a role in the development of dopamine producing neurons during embryogenesis. Mutations in this gene are associated with an increased risk of developing Parkinson's disease. Alternate splicing results in multiple transcript variants. [provided by RefSeq, Feb 2012]
Synonyms:	LMX1; LMX1.1

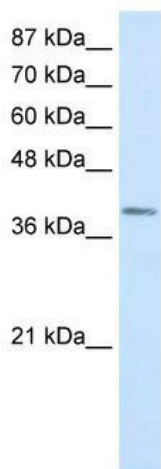


[View online »](#)

Note: Immunogen sequence homology: Dog: 100%; Pig: 100%; Rat: 100%; Human: 100%; Bovine: 100%; Rabbit: 100%; Guinea pig: 100%; Mouse: 93%; Horse: 86%

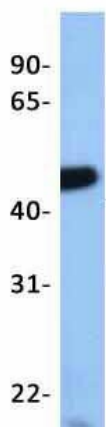
Protein Families: ES Cell Differentiation/IPS, Transcription Factors

Product images:



WB Suggested Anti-LMX1A Antibody Titration: 0.3125ug/ml; ELISA Titer: 1:62500; Positive Control: Jurkat cell lysate

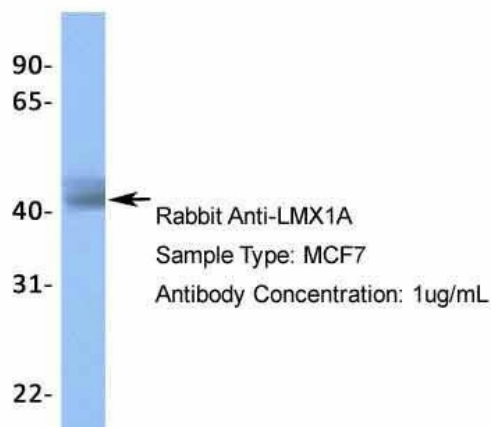
LMX1A



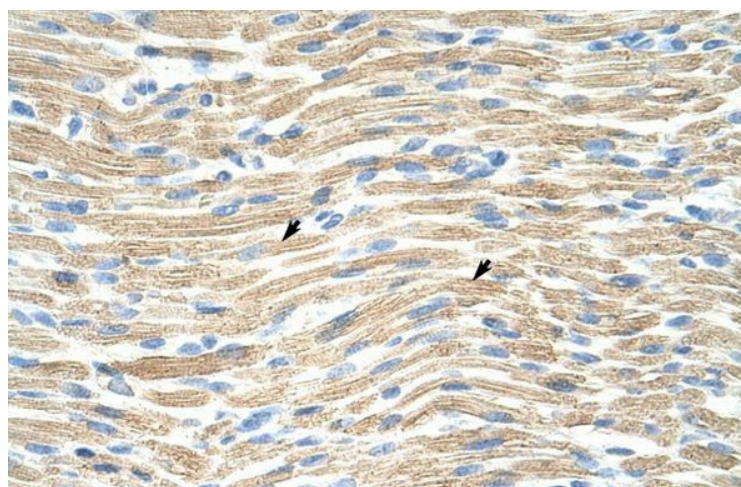
← Rabbit Anti-LMX1A
 Sample Type: 721_B
 Antibody Concentration: 1ug/mL

Host: Rabbit; Target Name: TRIM10; Sample Tissue: 721_B; Antibody Dilution: 1.0 ug/ml

LMX1A



Host: Rabbit; Target Name: LMX1A; Sample Tissue: MCF7; Antibody Dilution: 1.0 ug/ml



Rabbit Anti-LMX1A Antibody; Paraffin Embedded Tissue: Human Muscle; Cellular Data: Skeletal muscle cells; Antibody Concentration: 4.0-8.0 ug/ml; Magnification: 400X