

## Product datasheet for **TA329739**

### LMX1A Rabbit Polyclonal Antibody

#### Product data:

Product Type:	Primary Antibodies
Applications:	IHC, WB
Recommended Dilution:	IHC, WB
Reactivity:	Human
Host:	Rabbit
Isotype:	IgG
Clonality:	Polyclonal
Immunogen:	The immunogen for anti-LMX1A antibody: synthetic peptide directed towards the middle region of human LMX1A. Synthetic peptide located within the following region: QNQRAKMKKLARRQQQQDQQNTQRLSSAQTNGGGSAGMEGIMNPYAL
Formulation:	Liquid. Purified antibody supplied in 1x PBS buffer with 0.09% (w/v) sodium azide and 2% sucrose. <i>Note that this product is shipped as lyophilized powder to China customers.</i>
Conjugation:	Unconjugated
Storage:	Store at -20°C as received.
Stability:	Stable for 12 months from date of receipt.
Predicted Protein Size:	43 kDa
Gene Name:	LIM homeobox transcription factor 1 alpha
Database Link:	<a href="#">NP_796372</a> <a href="#">Entrez Gene 4009 Human</a> <a href="#">Q8TE12</a>



[View online »](#)

**Background:**

Insulin is produced exclusively by the beta cells in the islets of Langerhans in the pancreas. The level and beta-cell specificity of insulin gene expression are regulated by a set of nuclear genes that bind to specific sequences within the promoter of the insulin gene (INS; MIM 176730) and interact with RNA polymerase to activate or repress transcription. LMX1 is a homeodomain protein that binds an A/T-rich sequence in the insulin promoter and stimulates transcription of insulin. Insulin is produced exclusively by the beta cells in the islets of Langerhans in the pancreas. The level and beta-cell specificity of insulin gene expression are regulated by a set of nuclear genes that bind to specific sequences within the promoter of the insulin gene (INS; MIM 176730) and interact with RNA polymerase to activate or repress transcription. LMX1 is a homeodomain protein that binds an A/T-rich sequence in the insulin promoter and stimulates transcription of insulin (German et al., 1994 [PubMed 7698771]). [supplied by OMIM]. PRIMARYREFSEQ\_SPAN PRIMARY\_IDENTIFIER PRIMARY\_SPAN COMP 1-199 AL160058.8 14249-14447 c 200-2447 AK127724.1 362-2609 2448-3382 AL390730.12 9415-10349 c

**Synonyms:**

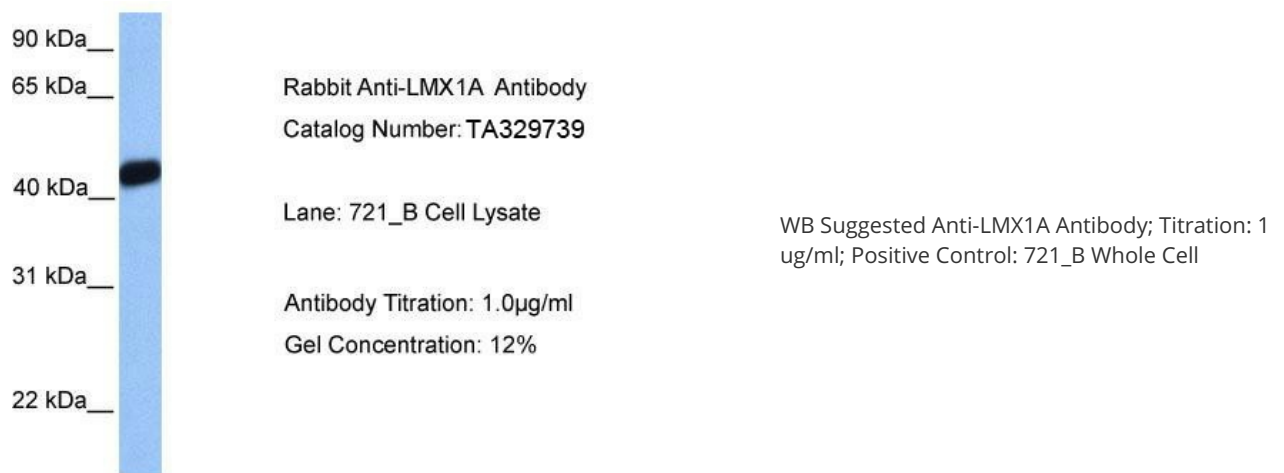
LMX1; LMX1.1

**Note:**

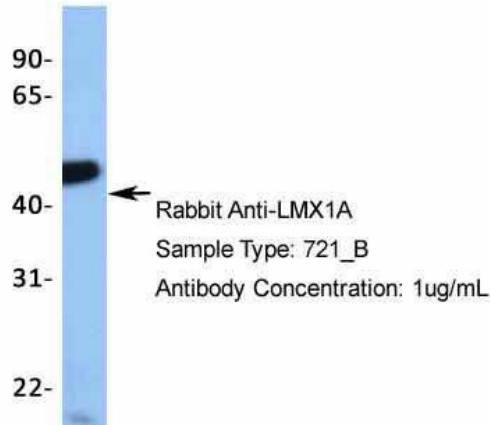
Immunogen sequence homology: Dog: 100%; Pig: 100%; Rat: 100%; Human: 100%; Bovine: 100%; Rabbit: 100%; Guinea pig: 100%; Mouse: 93%; Horse: 86%

**Protein Families:**

ES Cell Differentiation/IPS, Transcription Factors

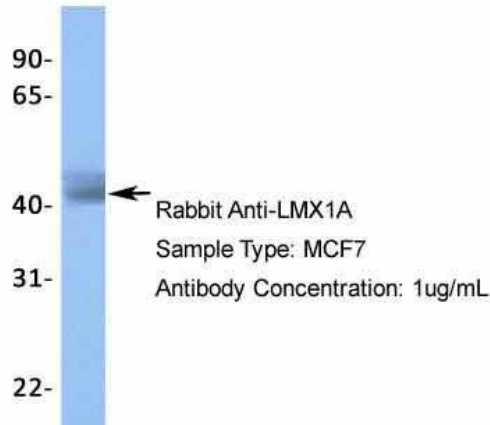
**Product images:**


### LMX1A

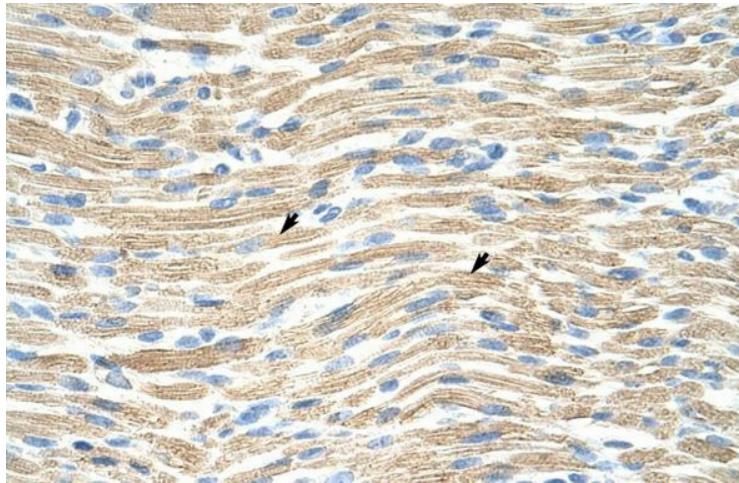


Host: Rabbit; Target Name: TRIM10; Sample Tissue: 721\_B; Antibody Dilution: 1.0 ug/ml

### LMX1A



Host: Rabbit; Target Name: LMX1A; Sample Tissue: MCF7; Antibody Dilution: 1.0 ug/ml



Rabbit Anti-LMX1A Antibody; Paraffin Embedded Tissue: Human Muscle; Cellular Data: Skeletal muscle cells; Antibody Concentration: 4.0-8.0 ug/ml; Magnification: 400X