

Product datasheet for **TA329736**

IRF5 Rabbit Polyclonal Antibody

Product data:

Product Type:	Primary Antibodies
Applications:	WB
Recommended Dilution:	WB
Reactivity:	Human
Host:	Rabbit
Isotype:	IgG
Clonality:	Polyclonal
Immunogen:	The immunogen for anti-IRF5 antibody: synthetic peptide directed towards the middle region of human IRF5. Synthetic peptide located within the following region: IFFCFGEWPDPRKPREKKLITVQVVPVAARLLLEMFSGELSWADSIRLQ
Formulation:	Liquid. Purified antibody supplied in 1x PBS buffer with 0.09% (w/v) sodium azide and 2% sucrose. <i>Note that this product is shipped as lyophilized powder to China customers.</i>
Conjugation:	Unconjugated
Storage:	Store at -20°C as received.
Stability:	Stable for 12 months from date of receipt.
Predicted Protein Size:	56 kDa
Gene Name:	interferon regulatory factor 5
Database Link:	NP_116032 Entrez Gene 3663 Human Q13568



[View online »](#)

Background:

IRF5 is a member of the interferon regulatory factor (IRF) family, a group of transcription factors with diverse roles, including virus-mediated activation of interferon, and modulation of cell growth, differentiation, apoptosis, and immune system activity. Members of the IRF family are characterized by a conserved N-terminal DNA-binding domain containing tryptophan (W) repeats. Alternative splice variants encoding different isoforms exist. This gene encodes a member of the interferon regulatory factor (IRF) family, a group of transcription factors with diverse roles, including virus-mediated activation of interferon, and modulation of cell growth, differentiation, apoptosis, and immune system activity. Members of the IRF family are characterized by a conserved N-terminal DNA-binding domain containing tryptophan (W) repeats. Alternative splice variants encoding different isoforms exist.

Synonyms:

SLEB10

Note:

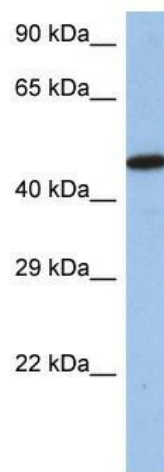
Immunogen sequence homology: Dog: 100%; Pig: 100%; Rat: 100%; Horse: 100%; Human: 100%; Mouse: 100%; Bovine: 100%; Rabbit: 100%; Guinea pig: 92%; Zebrafish: 85%

Protein Families:

Transcription Factors

Protein Pathways:

Toll-like receptor signaling pathway

Product images:

WB Suggested Anti-IRF5 Antibody Titration: 0.2-1 ug/ml; ELISA Titer: 1:312500; Positive Control: SH-SY5Y cell lysate