

## Product datasheet for **TA329735**

### INSM1 Rabbit Polyclonal Antibody

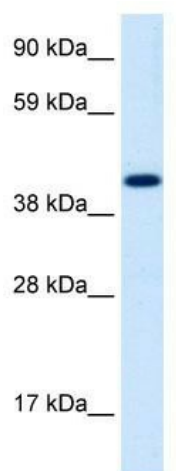
#### Product data:

Product Type:	Primary Antibodies
Applications:	IHC, WB
Recommended Dilution:	WB, IHC
Reactivity:	Human
Host:	Rabbit
Isotype:	IgG
Clonality:	Polyclonal
Immunogen:	The immunogen for anti-INSM1 antibody: synthetic peptide directed towards the middle region of human INSM1. Synthetic peptide located within the following region: PAAALRPPGKRPPPPTAAEPPAKAVKAPGAKKPKAIRKLHFEDEVTTSPV
Formulation:	Liquid. Purified antibody supplied in 1x PBS buffer with 0.09% (w/v) sodium azide and 2% sucrose. <i>Note that this product is shipped as lyophilized powder to China customers.</i>
Conjugation:	Unconjugated
Storage:	Store at -20°C as received.
Stability:	Stable for 12 months from date of receipt.
Predicted Protein Size:	53 kDa
Gene Name:	INSM transcriptional repressor 1
Database Link:	<a href="#">NP_002187</a> <a href="#">Entrez Gene 3642 Human Q01101</a>
Background:	Insulinoma-associated 1 (INSM1) gene is intronless and encodes a protein containing both a zinc finger DNA-binding domain and a putative prohormone domain. This gene is a sensitive marker for neuroendocrine differentiation of human lung tumors.
Synonyms:	IA-1; IA1
Note:	Immunogen sequence homology: Dog: 100%; Pig: 100%; Human: 100%; Mouse: 100%; Bovine: 100%; Zebrafish: 93%; Rat: 79%; Horse: 79%; Rabbit: 79%



[View online »](#)

## Product images:



WB Suggested Anti-INSM1 Antibody Titration:  
1.25ug/ml; Positive Control: Human Cerebellum



Human Heart