

Product datasheet for **TA329734**

Ilf3 Rabbit Polyclonal Antibody

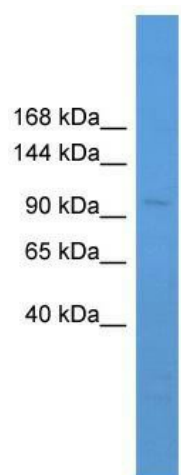
Product data:

Product Type:	Primary Antibodies
Applications:	WB
Recommended Dilution:	WB
Reactivity:	Mouse
Host:	Rabbit
Isotype:	IgG
Clonality:	Polyclonal
Immunogen:	The immunogen for anti-Ilf3 antibody: synthetic peptide corresponding to a region of Mouse. Synthetic peptide located within the following region: YQGDSYNSPVPPKHAGKKPLHGGQQKASYSSGYQSHQGQQQPYNQSQYSS
Formulation:	Liquid. Purified antibody supplied in 1x PBS buffer with 0.09% (w/v) sodium azide and 2% sucrose. <i>Note that this product is shipped as lyophilized powder to China customers.</i>
Conjugation:	Unconjugated
Storage:	Store at -20°C as received.
Stability:	Stable for 12 months from date of receipt.
Predicted Protein Size:	98 kDa
Gene Name:	interleukin enhancer binding factor 3
Database Link:	NP_034691 Entrez Gene 16201 Mouse Q9Z1X4
Background:	The function of Ilf3 remains unknown.
Synonyms:	CBTF; DRBF; DRBP76; MMP4; MPHOSPH4; MPP4; NF-AT-90; NF90; NF110; NFAR; NFAR-1; NFAR2; TCP80; TCP110
Note:	Immunogen sequence homology: Dog: 100%; Pig: 100%; Rat: 100%; Human: 100%; Guinea pig: 100%; Horse: 92%; Mouse: 92%; Bovine: 92%; Rabbit: 92%; Goat: 85%



[View online »](#)

Product images:



WB Suggested Anti-Ilf3 Antibody Titration: 0.2-1 ug/ml; ELISA Titer: 1:312500; Positive Control: Mouse Small Intestine