

Product datasheet for **TA329732**

TBX10 Rabbit Polyclonal Antibody

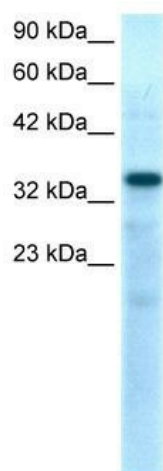
Product data:

Product Type:	Primary Antibodies
Applications:	IHC, WB
Recommended Dilution:	WB, IHC
Reactivity:	Human, Mouse
Host:	Rabbit
Isotype:	IgG
Clonality:	Polyclonal
Immunogen:	The immunogen for anti-TBX10 antibody: synthetic peptide directed towards the N terminal of human TBX10. Synthetic peptide located within the following region: TSSTGAQAVA EPTGQGPKNPRVSRVTVQLEMKPLWEEFNQLGTEMIVTKA
Formulation:	Liquid. Purified antibody supplied in 1x PBS buffer with 0.09% (w/v) sodium azide and 2% sucrose. <i>Note that this product is shipped as lyophilized powder to China customers.</i>
Conjugation:	Unconjugated
Storage:	Store at -20°C as received.
Stability:	Stable for 12 months from date of receipt.
Predicted Protein Size:	42 kDa
Gene Name:	T-box 10
Database Link:	NP_005986 Entrez Gene 109575 Mouse Entrez Gene 347853 Human O75333
Background:	TBX10, a member of the Tbx1-subfamily of conserved developmental genes, is located at human chromosome 11q13 and proximal mouse chromosome 19.
Synonyms:	TBX7; TBX13
Note:	Immunogen sequence homology: Human: 100%; Horse: 93%; Mouse: 93%; Rat: 92%; Pig: 86%; Bovine: 86%

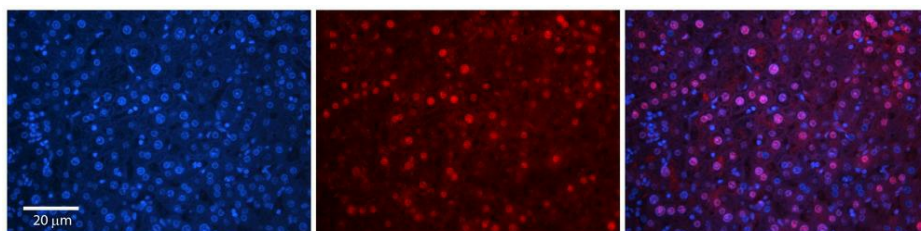


[View online »](#)

Product images:



WB Suggested Anti-TBX10 Antibody Titration: 0.2-1 ug/ml; Positive Control: Human Muscle



Rabbit Anti-TBX10 Antibody; Formalin Fixed Paraffin Embedded Tissue: Human Adult Liver; Observed Staining: Nuclear in hepatocytes, strong signal, wide tissue distribution; Primary Antibody Concentration: 1:100; Secondary Antibody: Donkey anti-Rabbit-Cy3;