

## Product datasheet for **TA329729**

### ZNF391 Rabbit Polyclonal Antibody

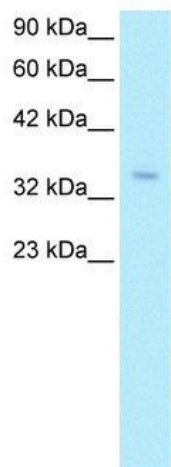
#### Product data:

Product Type:	Primary Antibodies
Applications:	IHC, WB
Recommended Dilution:	WB, IHC
Reactivity:	Human
Host:	Rabbit
Isotype:	IgG
Clonality:	Polyclonal
Immunogen:	The immunogen for anti-ZNF391 antibody: synthetic peptide directed towards the N terminal of human LOC346157. Synthetic peptide located within the following region: SLSPNLDAQKIPKGGHSGPISRKNSKDNSDLIKHQRLFSQRKPKCKNECE
Formulation:	Liquid. Purified antibody supplied in 1x PBS buffer with 0.09% (w/v) sodium azide and 2% sucrose.
Conjugation:	Unconjugated
Storage:	Store at -20°C as received.
Stability:	Stable for 12 months from date of receipt.
Predicted Protein Size:	46 kDa
Gene Name:	zinc finger protein 391
Database Link:	<a href="#">NP_001070249</a> <a href="#">Entrez Gene 346157 Human</a> <a href="#">Q9UJN7</a>
Background:	LOC346157 is a new candidate transcription factor.
Synonyms:	dj153G14.3
Note:	Immunogen sequence homology: Human: 100%; Bovine: 100%; Pig: 92%; Dog: 85%; Horse: 85%

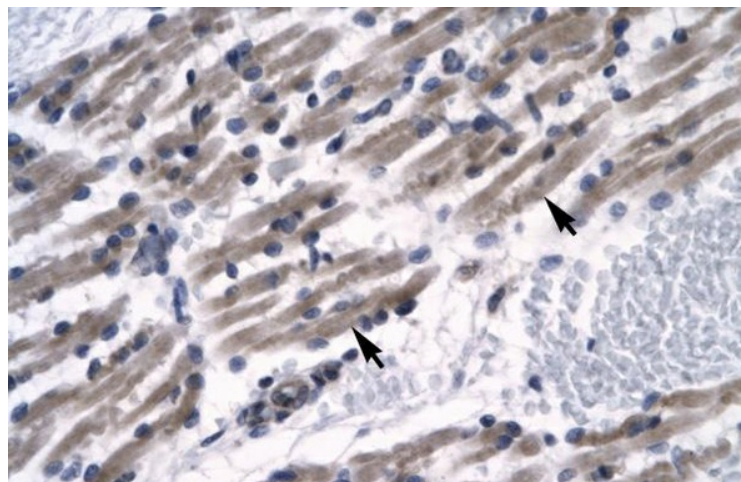


[View online »](#)

## Product images:



WB Suggested Anti-ZNF391 Antibody Titration:  
0.2-1 ug/ml; Positive Control: HepG2 cell lysate



Human Muscle