

## Product datasheet for **TA329728**

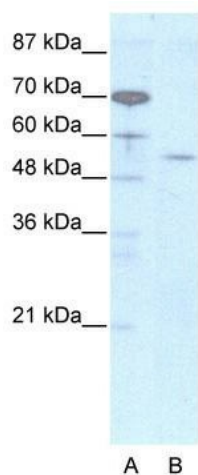
### EVX2 Rabbit Polyclonal Antibody

#### Product data:

Product Type:	Primary Antibodies
Applications:	WB
Recommended Dilution:	WB
Reactivity:	Human
Host:	Rabbit
Isotype:	IgG
Clonality:	Polyclonal
Immunogen:	The immunogen for anti-EVX2 antibody: synthetic peptide directed towards the N terminal of human LOC344191. Synthetic peptide located within the following region: GELPAKGGKFEIDTLFNLQHTGSESTVSSEISSAAESRKKPGHYSEAAAEA
Formulation:	Liquid. Purified antibody supplied in 1x PBS buffer with 0.09% (w/v) sodium azide and 2% sucrose. <i>Note that this product is shipped as lyophilized powder to China customers.</i>
Conjugation:	Unconjugated
Storage:	Store at -20°C as received.
Stability:	Stable for 12 months from date of receipt.
Predicted Protein Size:	74 kDa
Gene Name:	even-skipped homeobox 2
Database Link:	<a href="#">NP_001073927</a> <a href="#">Entrez Gene 344191 Human</a> <a href="#">Q03828</a>
Background:	LOC344191 is a new candidate transcription factor.
Synonyms:	EVX-2
Note:	Immunogen sequence homology: Human: 100%; Dog: 85%; Pig: 85%; Rat: 85%; Horse: 85%; Mouse: 85%; Guinea pig: 85%



[View online »](#)

**Product images:**

WB Suggested Anti-EVX2 Antibody Titration:  
2.5ug/ml; ELISA Titer: 1:2500; Positive Control:  
HepG2 cell lysate