

## Product datasheet for **TA329727**

### BARHL2 Rabbit Polyclonal Antibody

#### Product data:

Product Type:	Primary Antibodies
Applications:	IHC, WB
Recommended Dilution:	WB, IHC
Reactivity:	Human
Host:	Rabbit
Isotype:	IgG
Clonality:	Polyclonal
Immunogen:	The immunogen for anti-BARHL2 antibody: synthetic peptide directed towards the middle region of human BARHL2. Synthetic peptide located within the following region: SSPHHTPKQESNAVHESFRPKLEQEDSKTKLDKREDSQSDIKCHGTKEEG
Formulation:	Liquid. Purified antibody supplied in 1x PBS buffer with 0.09% (w/v) sodium azide and 2% sucrose. <i>Note that this product is shipped as lyophilized powder to China customers.</i>
Conjugation:	Unconjugated
Storage:	Store at -20°C as received.
Stability:	Stable for 12 months from date of receipt.
Predicted Protein Size:	42 kDa
Gene Name:	BarH like homeobox 2
Database Link:	<a href="#">NP_064447</a> <a href="#">Entrez Gene 343472 Human</a> <a href="#">Q9NY43</a>
Background:	BARHL2 and BARHL1 are two homeobox genes in mouse and human, which are highly related to the Bar Drosophila genes.
Synonyms:	BarH-like 2; BarH-like homeobox 2; OTTHUMP00000011704
Note:	Immunogen sequence homology: Pig: 100%; Rat: 100%; Horse: 100%; Human: 100%; Guinea pig: 100%; Mouse: 93%; Rabbit: 93%; Dog: 86%; Bovine: 86%; Zebrafish: 77%

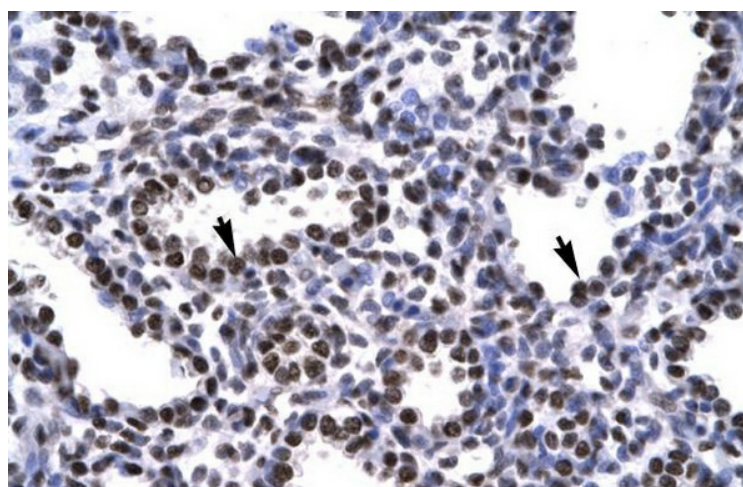


[View online »](#)

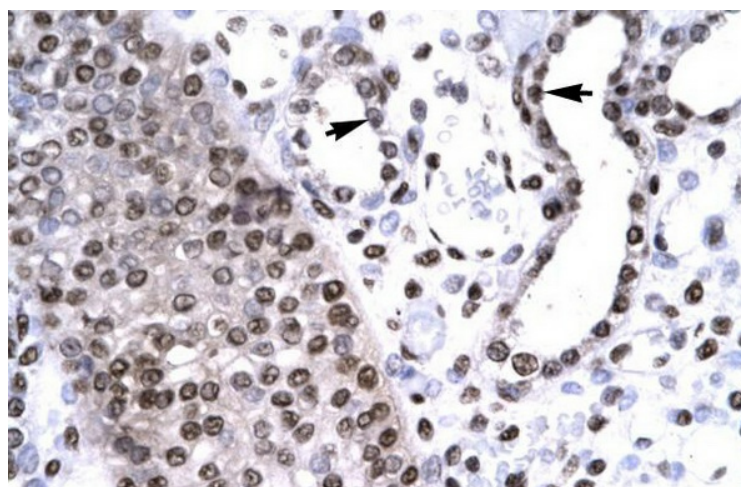
## Product images:



WB Suggested Anti-BARHL2 Antibody Titration:  
0.05-2.0ug/ml; Positive Control: HepG2 cell lysate



Human Lung



Human kidney