

Product datasheet for **TA329725**

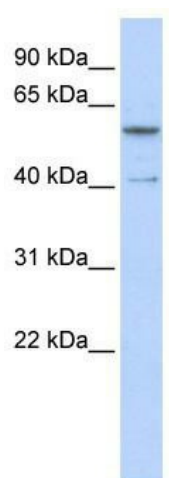
ZNF284 Rabbit Polyclonal Antibody

Product data:

Product Type:	Primary Antibodies
Applications:	WB
Recommended Dilution:	WB
Reactivity:	Human
Host:	Rabbit
Isotype:	IgG
Clonality:	Polyclonal
Immunogen:	The immunogen for anti-ZNF284 antibody: synthetic peptide directed towards the C terminal of human ZNF284. Synthetic peptide located within the following region: IHTGEKPYKYSTA EKNYSNVRIVGRAVSTVHAFKTNKATTVEKKHPNVRT
Formulation:	Liquid. Purified antibody supplied in 1x PBS buffer with 0.09% (w/v) sodium azide and 2% sucrose. <i>Note that this product is shipped as lyophilized powder to China customers.</i>
Conjugation:	Unconjugated
Storage:	Store at -20°C as received.
Stability:	Stable for 12 months from date of receipt.
Predicted Protein Size:	56 kDa
Gene Name:	zinc finger protein 284
Database Link:	NP_001032902 Entrez Gene 342909 Human Q2VY69
Background:	ZNF284 belongs to the krueppel C2H2-type zinc-finger protein family. It contains 15 C2H2-type zinc fingers and 1 KRAB domain. ZNF284 may be involved in transcriptional regulation.
Synonyms:	ZNF284L



[View online »](#)

Product images:

WB Suggested Anti-ZNF284 Antibody Titration:
0.2-1 ug/ml; ELISA Titer: 1:12500; Positive Control:
Human brain