

Product datasheet for **TA329723**

TFAP2E Rabbit Polyclonal Antibody

Product data:

Product Type:	Primary Antibodies
Applications:	WB
Recommended Dilution:	WB
Reactivity:	Human
Host:	Rabbit
Isotype:	IgG
Clonality:	Polyclonal
Immunogen:	The immunogen for anti-TFAP2E antibody: synthetic peptide directed towards the N terminal of human TFAP2E. Synthetic peptide located within the following region: MLVHTYSAMERPDGLGAAAGGARLSSLPQAAYGPAPPLCHTPAATAAAEF
Formulation:	Liquid. Purified antibody supplied in 1x PBS buffer with 0.09% (w/v) sodium azide and 2% sucrose.
Conjugation:	Unconjugated
Storage:	Store at -20°C as received.
Stability:	Stable for 12 months from date of receipt.
Predicted Protein Size:	46 kDa
Gene Name:	transcription factor AP-2 epsilon
Database Link:	NP_848643 Entrez Gene 339488 Human Q6VUC0
Background:	TFAP2E is the sequence-specific DNA-binding protein that interacts with inducible viral and cellular enhancer elements to regulate transcription of selected genes. AP-2 factors bind to the consensus sequence 5'-GCCNNNGGC-3' and activate genes involved in a large spectrum of important biological functions including proper eye, face, body wall, limb and neural tube development. They also suppress a number of genes including MCAM/MUC18, C/EBP alpha and MYC. AP-2 epsilon may play a role in the development of the CNS and in cartilage differentiation
Synonyms:	AP2E

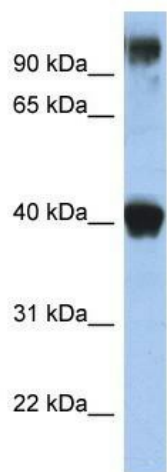


[View online »](#)

Note: Immunogen sequence homology: Human: 100%; Bovine: 100%; Mouse: 92%

Protein Families: Transcription Factors

Product images:



WB Suggested Anti-TFAP2E Antibody Titration:
0.2-1 ug/ml; ELISA Titer: 1:62500; Positive Control:
Human Stomach