

Product datasheet for **TA329722**

PP14397 (JMJD8) Rabbit Polyclonal Antibody

Product data:

Product Type:	Primary Antibodies
Applications:	IHC, WB
Recommended Dilution:	WB, IHC
Reactivity:	Human
Host:	Rabbit
Isotype:	IgG
Clonality:	Polyclonal
Immunogen:	The immunogen for anti-JMJD8 antibody: synthetic peptide directed towards the middle region of human LOC339123. Synthetic peptide located within the following region: FGDRVRLSTANTYSYHKVDLPFQEYVEQLLHPQDPTSLGNDTLYFFGDN
Formulation:	Liquid. Purified antibody supplied in 1x PBS buffer with 0.09% (w/v) sodium azide and 2% sucrose.
Conjugation:	Unconjugated
Storage:	Store at -20°C as received.
Stability:	Stable for 12 months from date of receipt.
Predicted Protein Size:	32 kDa
Gene Name:	jumonji domain containing 8
Database Link:	NP_001005920 Entrez Gene 339123 Human Q96S16
Background:	LOC339123 is a candidate transcription factor located on chromosome 16.
Synonyms:	C16orf20; PP14397
Note:	Immunogen sequence homology: Human: 100%; Pig: 92%; Rat: 92%; Mouse: 92%; Dog: 85%; Horse: 85%; Guinea pig: 85%; Bovine: 77%

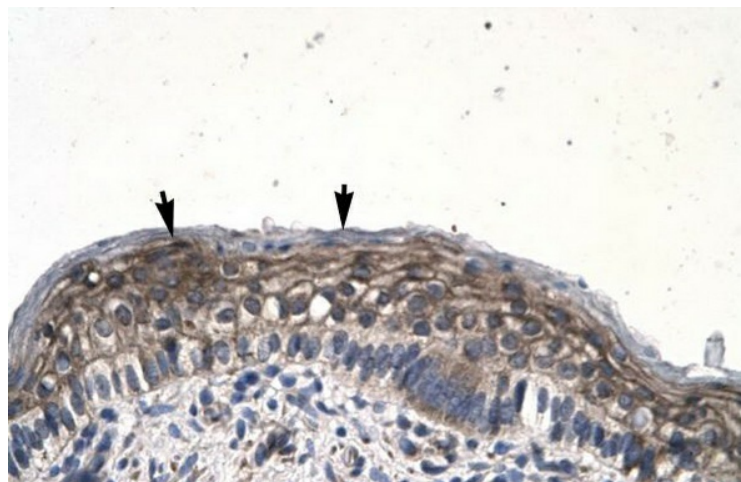


[View online »](#)

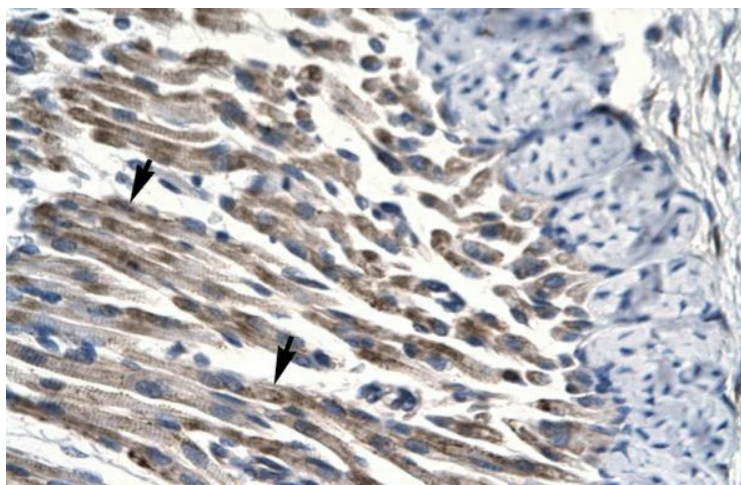
Product images:



WB Suggested Anti-JMJD8 Antibody Titration: 0.2-1 ug/ml; ELISA Titer: 1:312500; Positive Control: Jurkat cell lysate



Human Spermatophore



Human Muscle