

## Product datasheet for **TA329721**

### CHX10 (VSX2) Rabbit Polyclonal Antibody

#### Product data:

Product Type:	Primary Antibodies
Applications:	WB
Recommended Dilution:	WB
Reactivity:	Human
Host:	Rabbit
Isotype:	IgG
Clonality:	Polyclonal
Immunogen:	The immunogen for anti-CHX10 antibody: synthetic peptide directed towards the C terminal of human CHX10. Synthetic peptide located within the following region: ESILKSAKDGIMDSCAPWLLGMHKKSLAAAESGRKPEGERQALPKLDKM
Formulation:	Liquid. Purified antibody supplied in 1x PBS buffer with 0.09% (w/v) sodium azide and 2% sucrose. <i>Note that this product is shipped as lyophilized powder to China customers.</i>
Conjugation:	Unconjugated
Storage:	Store at -20°C as received.
Stability:	Stable for 12 months from date of receipt.
Predicted Protein Size:	39 kDa
Gene Name:	visual system homeobox 2
Database Link:	<a href="#">NP_878314</a> <a href="#">Entrez Gene 338917 Human P58304</a>
Background:	Human CHX10 is expressed in progenitor cells of the developing neuroretina and in the inner nuclear layer of the mature retina. The strong conservation in vertebrates of the CHX10 sequence, pattern of expression and loss-of-function phenotypes demonstrates the evolutionary importance of the genetic network through which this gene regulates eye development.
Synonyms:	CHX10; HOX10; MCOP2; MCOPCB3; RET1

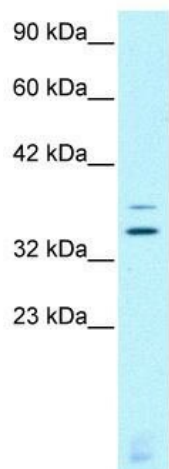


[View online »](#)

**Note:** Immunogen sequence homology: Human: 100%; Pig: 92%; Rat: 92%; Horse: 92%; Mouse: 92%; Bovine: 92%; Rabbit: 92%; Guinea pig: 92%; Dog: 85%

**Protein Families:** Transcription Factors

**Product images:**



WB Suggested Anti-CHX10 Antibody Titration: 0.2-1 ug/ml; ELISA Titer: 1:12500; Positive Control: Jurkat cell lysate