

Product datasheet for **TA329712**

HNF4 gamma (HNF4G) Rabbit Polyclonal Antibody

Product data:

Product Type:	Primary Antibodies
Applications:	WB
Recommended Dilution:	WB
Reactivity:	Human
Host:	Rabbit
Isotype:	IgG
Clonality:	Polyclonal
Immunogen:	The immunogen for anti-HNF4G antibody: synthetic peptide directed towards the C terminal of human HNF4G. Synthetic peptide located within the following region: MSTLVHADQISTPETPLPSPPPQSGSQEQYKIAANQASVISHQHLSKQKQL
Formulation:	Liquid. Purified antibody supplied in 1x PBS buffer with 0.09% (w/v) sodium azide and 2% sucrose. <i>Note that this product is shipped as lyophilized powder to China customers.</i>
Conjugation:	Unconjugated
Storage:	Store at -20°C as received.
Stability:	Stable for 12 months from date of receipt.
Predicted Protein Size:	46 kDa
Gene Name:	hepatocyte nuclear factor 4 gamma
Database Link:	NP_004124 Entrez Gene 3174 Human Q14541
Background:	HNF4 was first identified as a DNA binding activity in rat liver nuclear extracts and then was found to be an orphan member of the nuclear receptor superfamily. Binding sites for this factor were identified in many tissue-specifically expressed genes, and the protein was found to be essential for early embryonic development in the mouse
Synonyms:	NR2A2; NR2A3
Note:	Immunogen sequence homology: Dog: 100%; Pig: 100%; Rat: 100%; Human: 100%; Rabbit: 100%; Guinea pig: 100%; Horse: 93%; Mouse: 93%; Bovine: 93%

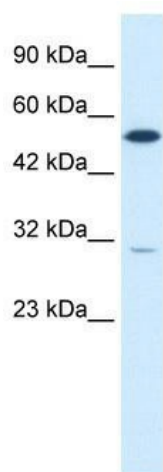


[View online »](#)

Protein Families: Druggable Genome, Nuclear Hormone Receptor, Transcription Factors

Protein Pathways: Maturity onset diabetes of the young

Product images:



WB Suggested Anti-HNF4G Antibody Titration: 0.2-1 ug/ml; Positive Control: Daudi cell lysate
HNF4G is supported by BioGPS gene expression data to be expressed in Daudi