

## Product datasheet for **TA329709**

### FOXA2 Rabbit Polyclonal Antibody

#### Product data:

Product Type:	Primary Antibodies
Applications:	WB
Recommended Dilution:	WB
Reactivity:	Human
Host:	Rabbit
Isotype:	IgG
Clonality:	Polyclonal
Immunogen:	The immunogen for anti-FOXA2 antibody: synthetic peptide directed towards the middle region of human FOXA2. Synthetic peptide located within the following region: ASQAQLGEAAGPASETPAGTESPHSSASPCQEHKRGGLGELKGTAAAALS
Formulation:	Liquid. Purified antibody supplied in 1x PBS buffer with 0.09% (w/v) sodium azide and 2% sucrose. <i>Note that this product is shipped as lyophilized powder to China customers.</i>
Conjugation:	Unconjugated
Storage:	Store at -20°C as received.
Stability:	Stable for 12 months from date of receipt.
Predicted Protein Size:	48 kDa
Gene Name:	forkhead box A2
Database Link:	<a href="#">NP_068556</a> <a href="#">Entrez Gene 3170 Human</a> <a href="#">Q9Y261</a>



[View online »](#)

**Background:**

FOXA2 is a member of the forkhead class of DNA-binding proteins. These hepatocyte nuclear factors are transcriptional activators for liver-specific transcripts such as albumin and transthyretin, and they also interact with chromatin. Similar family members in mice have roles in the regulation of metabolism and in the differentiation of the pancreas and liver. This gene has been linked to sporadic cases of maturity-onset diabetes of the young. This gene encodes a member of the forkhead class of DNA-binding proteins. These hepatocyte nuclear factors are transcriptional activators for liver-specific transcripts such as albumin and transthyretin, and they also interact with chromatin. Similar family members in mice have roles in the regulation of metabolism and in the differentiation of the pancreas and liver. This gene has been linked to sporadic cases of maturity-onset diabetes of the young. Two transcript variants encoding the same protein have been identified for this gene. This gene encodes a member of the forkhead class of DNA-binding proteins. These hepatocyte nuclear factors are transcriptional activators for liver-specific transcripts such as albumin and transthyretin, and they also interact with chromatin. Similar family members in mice have roles in the regulation of metabolism and in the differentiation of the pancreas and liver. This gene has been linked to sporadic cases of maturity-onset diabetes of the young. Two transcript variants encoding the same protein have been identified for this gene.

**Synonyms:**

HNF3B; TCF3B

**Note:**

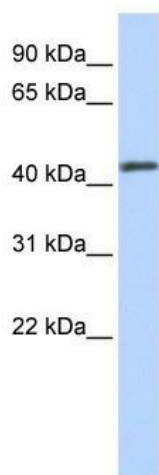
Immunogen sequence homology: Dog: 100%; Pig: 100%; Horse: 100%; Human: 100%; Rat: 92%; Mouse: 92%; Rabbit: 77%

**Protein Families:**

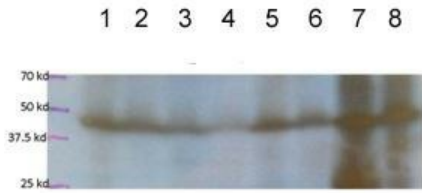
Embryonic stem cells, ES Cell Differentiation/IPS, Induced pluripotent stem cells, Transcription Factors

**Protein Pathways:**

Maturity onset diabetes of the young

**Product images:**

WB Suggested Anti-FOXA2 Antibody Titration: 0.2-1 ug/ml; ELISA Titer: 1:12500; Positive Control: Hela cell lysate

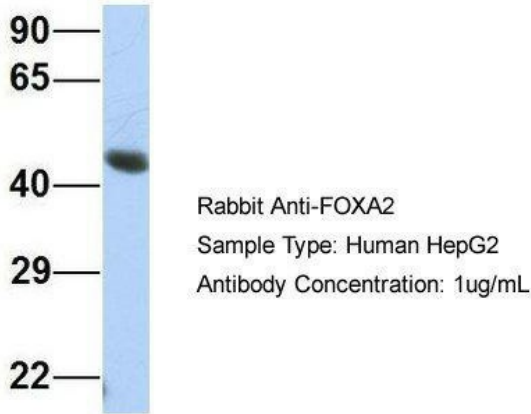


**Legend**

- 1. Normal Lung-1 (NL1)
- 2. Normal Lung-2 (NL2)
- 3. Normal Lung-3 (NL3)
- 4. Normal Lung-4 (NL4)
- 5. Normal Lung-5 (NL5)
- 6. Normal Lung-6 (NL6)
- 7. Normal Lung-7 (NL7)
- 8. Normal Lung-8 (NL8)

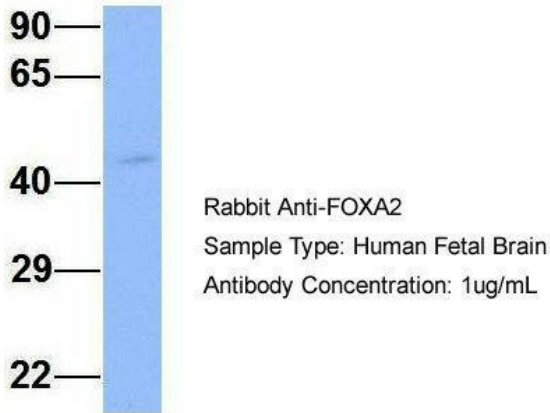
Sample Type: Human lung tissue protein extracts  
 Primary Dilution: 1:1000; Secondary (Anti-Rabbit HRP) Dilution: 1:1000

**FOXA2**



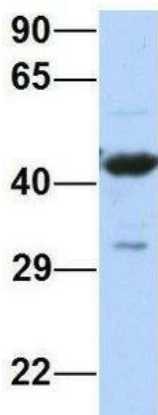
Host: Rabbit; Target Name: FOXA2; Sample Tissue: Human HepG2; Antibody Dilution: 1.0ug/ml  
 FOXA2 is strongly supported by BioGPS gene expression data to be expressed in HepG2

**FOXA2**



Host: Rabbit; Target Name: FOXA2; Sample Tissue: Human Fetal Brain; Antibody Dilution: 1.0ug/ml

## FOXA2



Rabbit Anti-FOXA2  
Sample Type: Human 721\_B  
Antibody Concentration: 1ug/mL

Host: Rabbit; Target Name: FOXA2; Sample  
Tissue: Human 721\_B; Antibody Dilution:  
1.0ug/ml FOXA2 is strongly supported by BioGPS  
gene expression data to be expressed in Human  
721\_B cells