

## Product datasheet for **TA329708**

### **NUR77 (NR4A1) Rabbit Polyclonal Antibody**

#### **Product data:**

<b>Product Type:</b>	Primary Antibodies
<b>Applications:</b>	IHC, WB
<b>Recommended Dilution:</b>	IHC, WB
<b>Reactivity:</b>	Human
<b>Host:</b>	Rabbit
<b>Isotype:</b>	IgG
<b>Clonality:</b>	Polyclonal
<b>Immunogen:</b>	The immunogen for anti-NR4A1 antibody: synthetic peptide directed towards the N terminal of human NR4A1. Synthetic peptide located within the following region: GTPAPSPGPRDHLASDPLTPEFIKPTMDLASPEAAPAAPTALPSFSTFMD
<b>Formulation:</b>	Liquid. Purified antibody supplied in 1x PBS buffer with 0.09% (w/v) sodium azide and 2% sucrose. <i>Note that this product is shipped as lyophilized powder to China customers.</i>
<b>Conjugation:</b>	Unconjugated
<b>Storage:</b>	Store at -20°C as received.
<b>Stability:</b>	Stable for 12 months from date of receipt.
<b>Predicted Protein Size:</b>	66 kDa
<b>Gene Name:</b>	nuclear receptor subfamily 4 group A member 1
<b>Database Link:</b>	<a href="#">NP_002126</a> <a href="#">Entrez Gene 3164 Human P22736</a>
<b>Background:</b>	NR4A1 encodes a member of the steroid-thyroid hormone-retinoid receptor superfamily. Expression is induced by phytohemagglutinin in human lymphocytes and by serum stimulation of arrested fibroblasts. The encoded protein acts as a nuclear transcription factor. Translocation of the protein from the nucleus to mitochondria induces apoptosis.
<b>Synonyms:</b>	GFRP1; HMR; N10; NAK-1; NGFIB; NP10; NUR77; TR3
<b>Note:</b>	Immunogen sequence homology: Dog: 100%; Horse: 100%; Human: 100%; Bovine: 100%; Pig: 93%; Rat: 93%; Rabbit: 93%; Guinea pig: 93%; Mouse: 92%

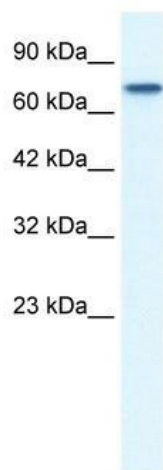


[View online »](#)

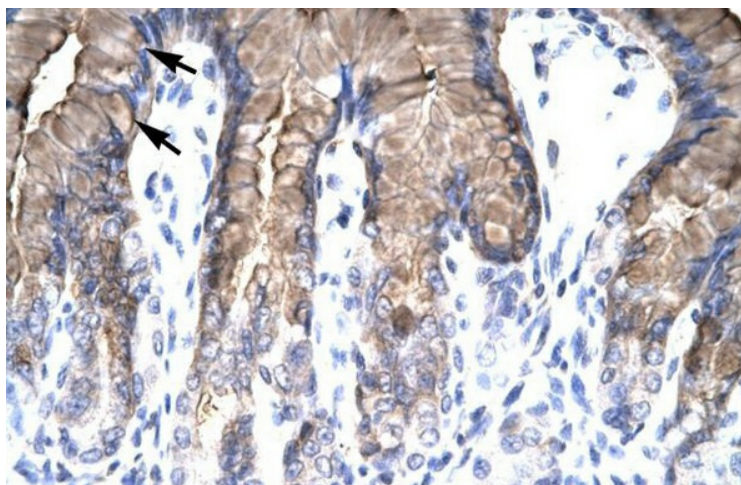
**Protein Families:** Druggable Genome, Nuclear Hormone Receptor, Transcription Factors

**Protein Pathways:** MAPK signaling pathway

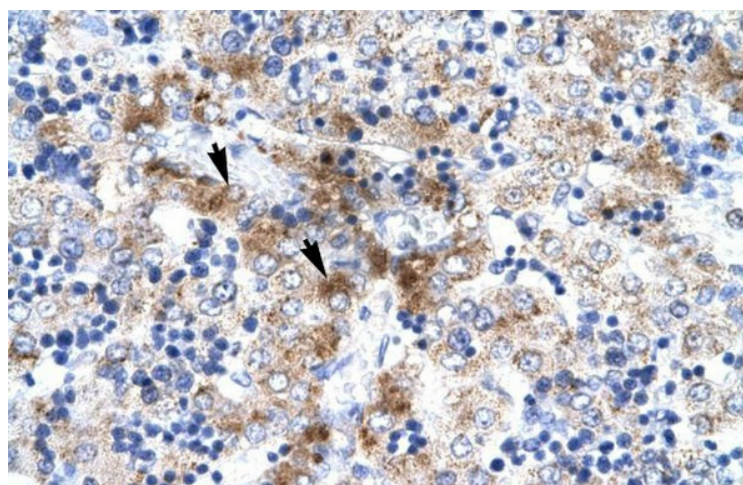
**Product images:**



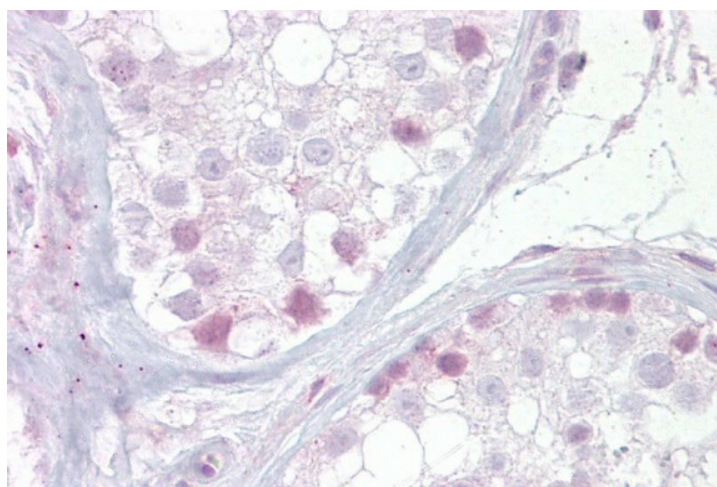
WB Suggested Antibody Titration: 0.2-1 ug/ml;  
Positive Control: HepG2



Rabbit Anti-NR4A1 Antibody; Paraffin Embedded  
Tissue: Human Stomach; Cellular Data: Mucous  
Cells; Antibody Concentration: 4.0-8.0 ug/ml;  
Magnification: 400X



Rabbit Anti-NR4A1 Antibody; Paraffin Embedded Tissue: Human Liver; Cellular Data: Hepatocytes; Antibody Concentration: 4.0-8.0 ug/ml; Magnification: 400X



Human Testis