

Product datasheet for **TA329707**

NUR77 (NR4A1) Rabbit Polyclonal Antibody

Product data:

Product Type:	Primary Antibodies
Applications:	IHC, WB
Recommended Dilution:	WB, IHC
Reactivity:	Human
Host:	Rabbit
Isotype:	IgG
Clonality:	Polyclonal
Immunogen:	The immunogen for anti-NR4A1 antibody: synthetic peptide directed towards the N terminal of human NR4A1. Synthetic peptide located within the following region: GTPAPSPGPRDHLASDPLTPEFIKPTMDLASPEAAPAAPTALPSFSTFMD
Formulation:	Liquid. Purified antibody supplied in 1x PBS buffer with 0.09% (w/v) sodium azide and 2% sucrose. <i>Note that this product is shipped as lyophilized powder to China customers.</i>
Conjugation:	Unconjugated
Storage:	Store at -20°C as received.
Stability:	Stable for 12 months from date of receipt.
Predicted Protein Size:	34 kDa
Gene Name:	nuclear receptor subfamily 4 group A member 1
Database Link:	NP_002126 Entrez Gene 3164 Human P22736
Background:	NR4A1 is a member of the steroid-thyroid hormone-retinoid receptor superfamily. Expression is induced by phytohemagglutinin in human lymphocytes and by serum stimulation of arrested fibroblasts. The encoded protein acts as a nuclear transcription factor. Translocation of the protein from the nucleus to mitochondria induces apoptosis.
Synonyms:	GFRP1; HMR; N10; NAK-1; NGFIB; NP10; NUR77; TR3
Note:	Immunogen sequence homology: Dog: 100%; Horse: 100%; Human: 100%; Bovine: 100%; Pig: 93%; Rat: 93%; Rabbit: 93%; Guinea pig: 93%; Mouse: 92%

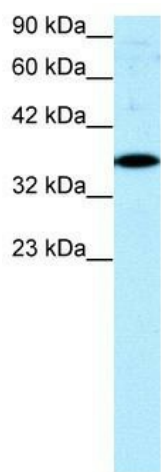


[View online »](#)

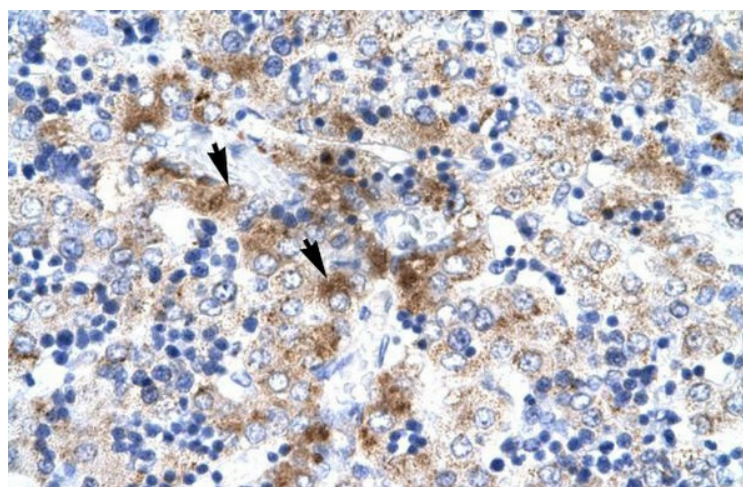
Protein Families: Druggable Genome, Nuclear Hormone Receptor, Transcription Factors

Protein Pathways: MAPK signaling pathway

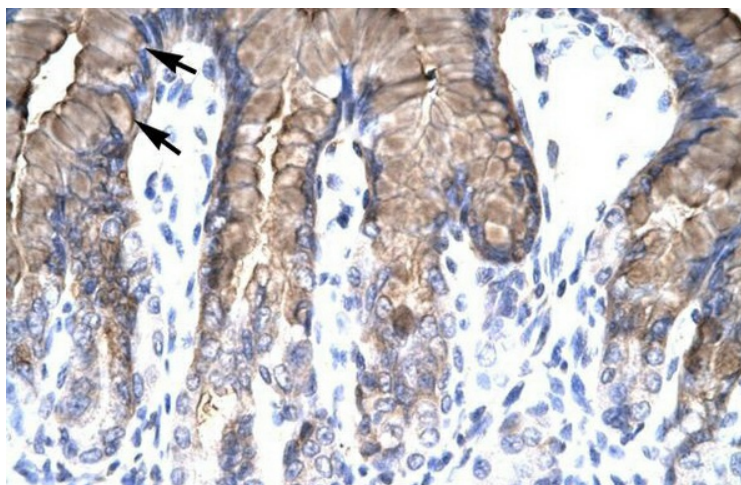
Product images:



WB Suggested Anti-NR4A1 Antibody Titration:
0.2-1 ug/ml; ELISA Titer: 1:312500; Positive
Control: HepG2 cell lysate



Rabbit Anti-NR4A1 Antibody; Paraffin Embedded
Tissue: Human Liver; Cellular Data: Hepatocytes;
Antibody Concentration: 4.0-8.0 ug/ml;
Magnification: 400X



Rabbit Anti-NR4A1 Antibody; Paraffin Embedded Tissue: Human Stomach; Cellular Data: Mucous Cells; Antibody Concentration: 4.0-8.0 ug/ml; Magnification: 400X