

## Product datasheet for **TA329705**

### **MNX1 Rabbit Polyclonal Antibody**

#### **Product data:**

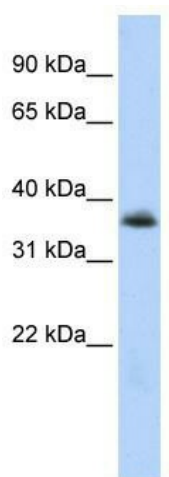
|                                |   |
|--------------------------------|---|
| <b>Product Type:</b>           | Primary Antibodies  |
| <b>Applications:</b>           | WB  |
| <b>Recommended Dilution:</b>   | WB  |
| <b>Reactivity:</b>             | Human   |
| <b>Host:</b>                   | Rabbit  |
| <b>Isotype:</b>                | IgG   |
| <b>Clonality:</b>              | Polyclonal  |
| <b>Immunogen:</b>              | The immunogen for anti-MNX1 antibody: synthetic peptide directed towards the N terminal of human MNX1. Synthetic peptide located within the following region:<br>AAASGTGGGGGGGASGGTSGSCSPASSEPPAAPADRLRAESPSPRLLA |
| <b>Formulation:</b>            | Liquid. Purified antibody supplied in 1x PBS buffer with 0.09% (w/v) sodium azide and 2% sucrose.<br><i>Note that this product is shipped as lyophilized powder to China customers.</i>                           |
| <b>Conjugation:</b>            | Unconjugated  |
| <b>Storage:</b>                | Store at -20°C as received.   |
| <b>Stability:</b>              | Stable for 12 months from date of receipt.  |
| <b>Predicted Protein Size:</b> | 40 kDa  |
| <b>Gene Name:</b>              | motor neuron and pancreas homeobox 1  |
| <b>Database Link:</b>          | <a href="#">NP_005506</a><br><a href="#">Entrez Gene 3110 Human P50219</a>  |
| <b>Background:</b>             | MNX1 contains 1 homeobox DNA-binding domain. MNX1 is a putative transcription factor involved in pancreas development and function. Defects in MNX1 are a cause of Currarino syndrome.                            |
| <b>Synonyms:</b>               | HB9; HLXB9; HOXHB9; SCRA1   |
| <b>Note:</b>                   | Immunogen sequence homology: Human: 100%; Pig: 93%; Dog: 86%; Rat: 79%; Mouse: 79%  |
| <b>Protein Families:</b>       | Druggable Genome, ES Cell Differentiation/IPS   |



[View online »](#)

Protein Pathways: Maturity onset diabetes of the young

**Product images:**



WB Suggested Anti-MNX1 Antibody Titration: 0.2-1 ug/ml; ELISA Titer: 1:62500; Positive Control: HepG2 cell lysate