

Product datasheet for **TA329703**

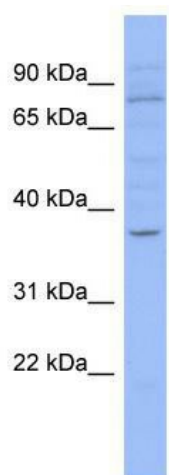
HIC1 Rabbit Polyclonal Antibody

Product data:

| | |
|-------------------------|---|
| Product Type: | Primary Antibodies |
| Applications: | WB |
| Recommended Dilution: | WB |
| Reactivity: | Human |
| Host: | Rabbit |
| Isotype: | IgG |
| Clonality: | Polyclonal |
| Immunogen: | The immunogen for anti-HIC1 antibody: synthetic peptide directed towards the N terminal of human HIC1. Synthetic peptide located within the following region: RRCSPLCGLDLSKKSPPGSAAPERPLAERELPPRPDSPPSAGPAAYKEPP |
| Formulation: | Liquid. Purified antibody supplied in 1x PBS buffer with 0.09% (w/v) sodium azide and 2% sucrose. <i>Note that this product is shipped as lyophilized powder to China customers.</i> |
| Conjugation: | Unconjugated |
| Storage: | Store at -20°C as received. |
| Stability: | Stable for 12 months from date of receipt. |
| Predicted Protein Size: | 74 kDa |
| Gene Name: | hypermethylated in cancer 1 |
| Database Link: | NP_006488 Entrez Gene 3090 Human Q14526 |
| Background: | This gene functions as a growth regulatory and tumor repressor gene. Hypermethylation or deletion of the region of this gene have been associated with tumors and the contiguous-gene syndrome, Miller-Dieker syndrome. Alternative splicing of this gene results in multiple transcript variants. [provided by RefSeq, Sep 2010] |
| Synonyms: | hic-1; ZBTB29; ZNF901 |
| Note: | Immunogen sequence homology: Dog: 100%; Pig: 100%; Human: 100%; Bovine: 100%; Guinea pig: 92%; Rat: 85%; Mouse: 85% |



[View online »](#)

Product images:

WB Suggested Anti-HIC1 Antibody Titration: 0.2-1 ug/ml; ELISA Titer: 1:312500; Positive Control: COLO205 cell lysate