

Product datasheet for **TA329700**

HCLS1 Rabbit Polyclonal Antibody

Product data:

Product Type:	Primary Antibodies
Applications:	IHC, WB
Recommended Dilution:	WB, IHC
Reactivity:	Human, Mouse
Host:	Rabbit
Isotype:	IgG
Clonality:	Polyclonal
Immunogen:	The immunogen for anti-HCLS1 antibody: synthetic peptide directed towards the N terminal of human HCLS1. Synthetic peptide located within the following region: VNDISEKEQRWGAKTIEGSGRTEHINIHLRNLKVEEHDVLRKKEMESGP
Formulation:	Liquid. Purified antibody supplied in 1x PBS buffer with 0.09% (w/v) sodium azide and 2% sucrose. <i>Note that this product is shipped as lyophilized powder to China customers.</i>
Conjugation:	Unconjugated
Storage:	Store at -20°C as received.
Stability:	Stable for 12 months from date of receipt.
Predicted Protein Size:	54 kDa
Gene Name:	hematopoietic cell-specific Lyn substrate 1
Database Link:	NP_005326 Entrez Gene 15163 Mouse Entrez Gene 3059 Human P14317
Background:	HCLS1 Tyr phosphorylation catalyzed by Syk and Lyn plays a crucial role in the translocation of the protein to the membrane and is involved in the cytoskeleton rearrangement triggered by thrombin in human platelets. This gene is a substrate for caspase cleavage during apoptosis.
Synonyms:	CTTNL; HS1; lckBP1; p75
Note:	Immunogen sequence homology: Human: 100%; Dog: 86%; Pig: 86%; Rat: 86%; Horse: 86%; Mouse: 86%; Bovine: 86%; Rabbit: 86%; Guinea pig: 86%



[View online »](#)

Protein Families: Transcription Factors

Protein Pathways: Pathogenic Escherichia coli infection, Tight junction

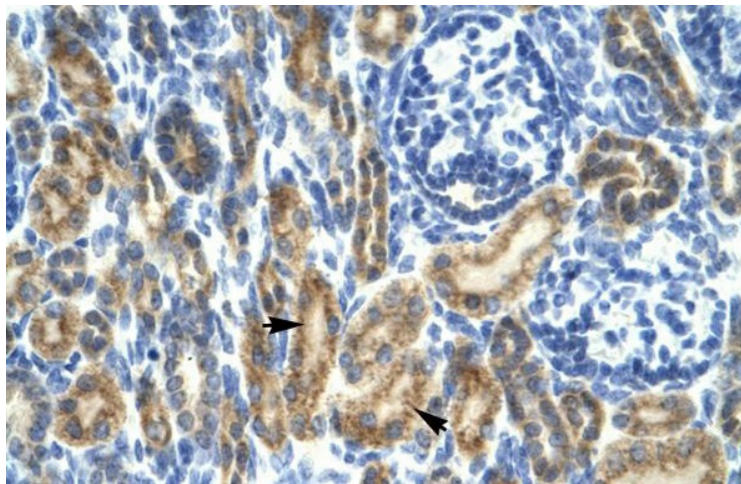
Product images:



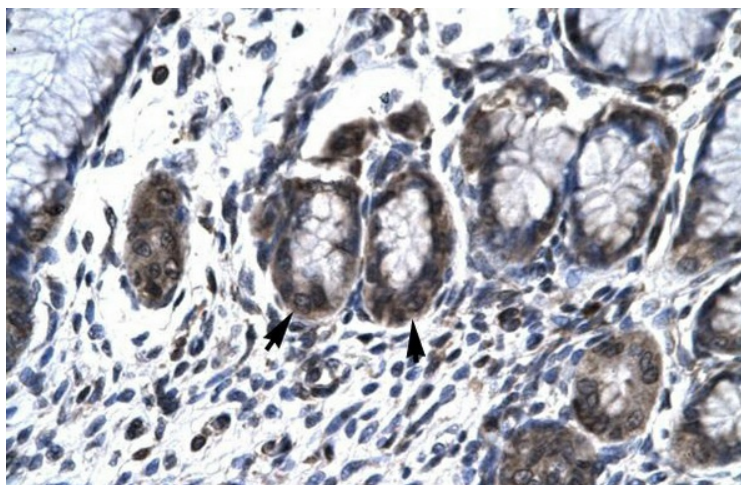
WB Suggested Anti-HCLS1 Antibody Titration: 1.25ug/ml; Positive Control: Jurkat cell lysate
HCLS1 is supported by BioGPS gene expression data to be expressed in Jurkat



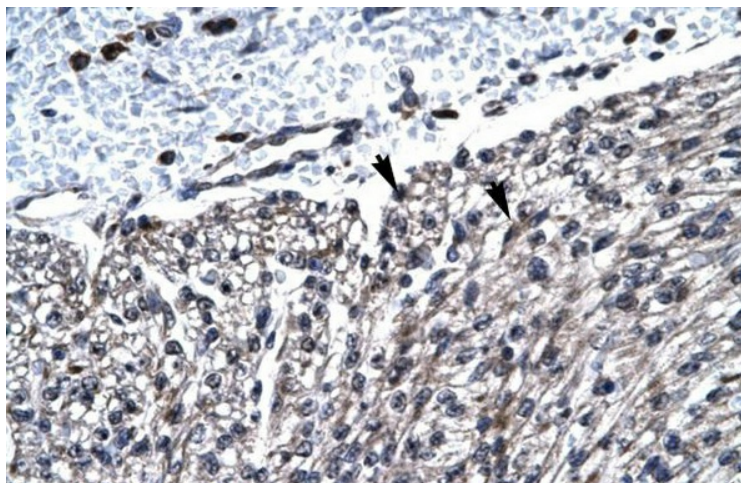
WB Suggested Anti-HCLS1 Antibody Titration: 0.2-1 ug/ml
ELISA Titer: 1:312500
Positive Control: Jurkat
HCLS1 is supported by BioGPS gene expression data to be expressed in Jurkat



Rabbit Anti-HCLS1 Antibody; Paraffin Embedded Tissue: Human Kidney; Cellular Data: Epithelial cells of renal tubule; Antibody Concentration: 4.0-8.0 ug/ml; Magnification: 400X



Rabbit Anti-HCLS1 Antibody; Paraffin Embedded Tissue: Human Stomach; Cellular Data: Epithelial cells of Fundic Gland; Antibody Concentration: 4.0-8.0 ug/ml; Magnification: 400X



Rabbit Anti-HCLS1 Antibody; Paraffin Embedded Tissue: Human Heart; Cellular Data: Myocardial cells; Antibody Concentration: 4.0-8.0 ug/ml; Magnification: 400X