

Product datasheet for **TA329698**

RAX Rabbit Polyclonal Antibody

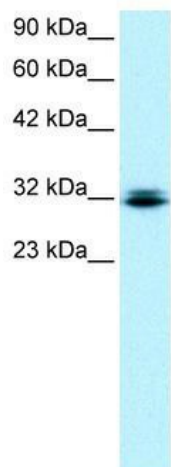
Product data:

Product Type:	Primary Antibodies
Applications:	IHC, WB
Recommended Dilution:	WB, IHC
Reactivity:	Human
Host:	Rabbit
Isotype:	IgG
Clonality:	Polyclonal
Immunogen:	The immunogen for anti-RAX antibody: synthetic peptide directed towards the N terminal of human RAX. Synthetic peptide located within the following region: MHLPGCAPAMADGFSFLAGHLLRSPGGSTRLHSIEAILGFTKDDGILGT
Formulation:	Liquid. Purified antibody supplied in 1x PBS buffer with 0.09% (w/v) sodium azide and 2% sucrose. <i>Note that this product is shipped as lyophilized powder to China customers.</i>
Conjugation:	Unconjugated
Storage:	Store at -20°C as received.
Stability:	Stable for 12 months from date of receipt.
Predicted Protein Size:	37 kDa
Gene Name:	retina and anterior neural fold homeobox
Database Link:	NP_038463 Entrez Gene 30062 Human Q9Y2V3
Background:	Retinal Homeobox Protein Rx (RAX) is a member of homeobox family of transcription factors. Mutations mouse and fish RAX lead to defects in retinal development and result in animal models of anophthalmia.
Synonyms:	MCOP3; RX
Note:	Immunogen sequence homology: Pig: 100%; Rat: 100%; Horse: 100%; Human: 100%; Mouse: 100%; Bovine: 100%; Guinea pig: 100%; Rabbit: 93%; Dog: 92%
Protein Families:	Druggable Genome

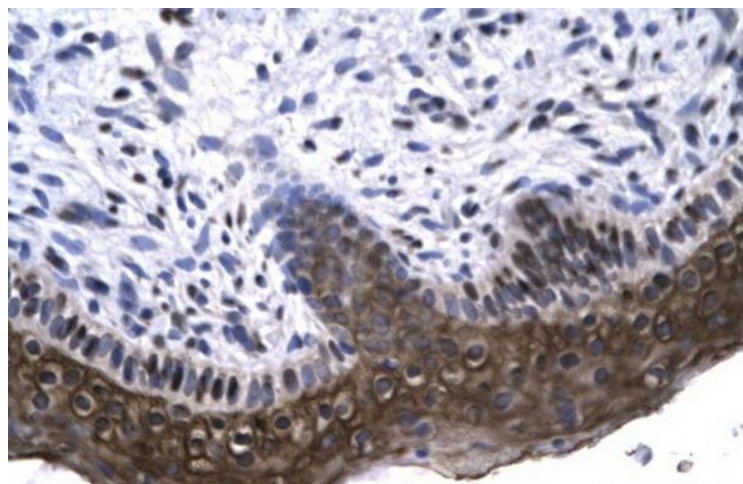


[View online »](#)

Product images:



WB Suggested Anti-RAX Antibody Titration: 0.2-1 ug/ml; ELISA Titer: 1:12500; Positive Control: Jurkat cell lysate



Human Spermatophore