

Product datasheet for **TA329697**

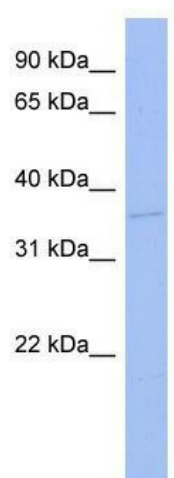
TLX3 Rabbit Polyclonal Antibody

Product data:

Product Type:	Primary Antibodies
Applications:	WB
Recommended Dilution:	WB
Reactivity:	Human
Host:	Rabbit
Isotype:	IgG
Clonality:	Polyclonal
Immunogen:	The immunogen for anti-TLX3 antibody: synthetic peptide directed towards the N terminal of human TLX3. Synthetic peptide located within the following region: MEAPASAQTPHPHEPISFGIDQILNSPDQDSAPAPRGPDPGASYLGGPPGG
Formulation:	Liquid. Purified antibody supplied in 1x PBS buffer with 0.09% (w/v) sodium azide and 2% sucrose.
Conjugation:	Unconjugated
Storage:	Store at -20°C as received.
Stability:	Stable for 12 months from date of receipt.
Predicted Protein Size:	32 kDa
Gene Name:	T-cell leukemia homeobox 3
Database Link:	NP_066305 Entrez Gene 30012 Human O43711
Background:	RNX (HOX11L2, TLX3) belongs to a family of orphan homeobox genes that encode DNA-binding nuclear transcription factors. Members of the HOX11 gene family are characterized by a threonine-47 replacing cytosine in the highly conserved homeodomain.
Synonyms:	HOX11L2; RNX
Note:	Immunogen sequence homology: Dog: 100%; Pig: 100%; Rat: 100%; Horse: 100%; Human: 100%; Mouse: 100%; Rabbit: 100%; Guinea pig: 100%; Bovine: 93%
Protein Families:	Transcription Factors



[View online »](#)

Product images:

WB Suggested Anti-TLX3 Antibody Titration: 0.2-1 ug/ml; ELISA Titer: 1:62500; Positive Control: ACHN cell lysate