

Product datasheet for **TA329695**

Ceramide synthase 2 (CERS2) Rabbit Polyclonal Antibody

Product data:

Product Type:	Primary Antibodies
Applications:	WB
Recommended Dilution:	WB
Reactivity:	Human
Host:	Rabbit
Isotype:	IgG
Clonality:	Polyclonal
Immunogen:	The immunogen for anti-LASS2 antibody: synthetic peptide directed towards the N terminal of human LASS2. Synthetic peptide located within the following region: IVRYFFELYVATPLAALLNIKEKTRLRAPPNATLEHFYLTSGKQPKQVEV
Formulation:	Liquid. Purified antibody supplied in 1x PBS buffer with 0.09% (w/v) sodium azide and 2% sucrose. <i>Note that this product is shipped as lyophilized powder to China customers.</i>
Conjugation:	Unconjugated
Storage:	Store at -20°C as received.
Stability:	Stable for 12 months from date of receipt.
Predicted Protein Size:	45 kDa
Gene Name:	ceramide synthase 2
Database Link:	NP_071358 Entrez Gene 29956 Human Q96G23
Background:	LASS2 is a protein that has sequence similarity to yeast longevity assurance gene 1. Mutation or overexpression of the related gene in yeast has been shown to alter yeast lifespan. The human protein may play a role in the regulation of cell growth. This gene encodes a protein that has sequence similarity to yeast longevity assurance gene 1. Mutation or overexpression of the related gene in yeast has been shown to alter yeast lifespan. The human protein may play a role in the regulation of cell growth. Alternatively spliced transcript variants encoding the same protein have been described.



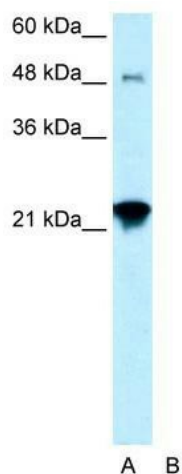
[View online »](#)

Synonyms: L3; LASS2; SP260; TMSG1

Note: Immunogen sequence homology: Pig: 100%; Rat: 100%; Human: 100%; Mouse: 100%; Guinea pig: 100%; Dog: 93%; Horse: 93%; Bovine: 93%; Rabbit: 93%

Protein Families: Transcription Factors, Transmembrane

Product images:



WB Suggested Anti-LASS2 Antibody Titration: 0.2-1 ug/ml; Positive Control: HepG2 cell lysate CERS2 is supported by BioGPS gene expression data to be expressed in HepG2