

## Product datasheet for **TA329694**

### CRTR1 (TFCP2L1) Rabbit Polyclonal Antibody

#### Product data:

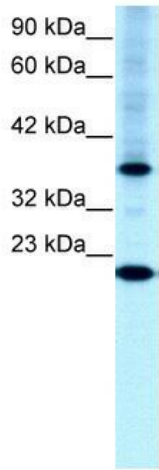
Product Type:	Primary Antibodies
Applications:	IHC, WB
Recommended Dilution:	WB, IHC
Reactivity:	Human
Host:	Rabbit
Isotype:	IgG
Clonality:	Polyclonal
Immunogen:	The immunogen for anti-TFCP2L1 antibody: synthetic peptide directed towards the N terminal of human TFCP2L1. Synthetic peptide located within the following region: LRDVLALPIFKQEEPQLSPENEARLPPLQYVLCATSPAVKLHEETLYL
Formulation:	Liquid. Purified antibody supplied in 1x PBS buffer with 0.09% (w/v) sodium azide and 2% sucrose. <i>Note that this product is shipped as lyophilized powder to China customers.</i>
Conjugation:	Unconjugated
Storage:	Store at -20°C as received.
Stability:	Stable for 12 months from date of receipt.
Predicted Protein Size:	54 kDa
Gene Name:	transcription factor CP2-like 1
Database Link:	<a href="#">NP_055368</a> <a href="#">Entrez Gene 29842 Human</a> <a href="#">Q9NZI6</a>
Background:	TFCP2L1 is a candidate CP2 family member. It is expressed in a developmentally regulated fashion in vivo and acts as a direct repressor of transcription. CP2-related proteins comprise a family of DNA-binding transcription factors that are generally activators of transcription and expressed ubiquitously.
Synonyms:	CRTR1; LBP-9; LBP9
Note:	Immunogen sequence homology: Dog: 100%; Human: 100%; Bovine: 100%; Rabbit: 100%; Pig: 93%; Rat: 93%; Horse: 93%; Mouse: 93%; Guinea pig: 93%; Yeast: 75%



[View online »](#)

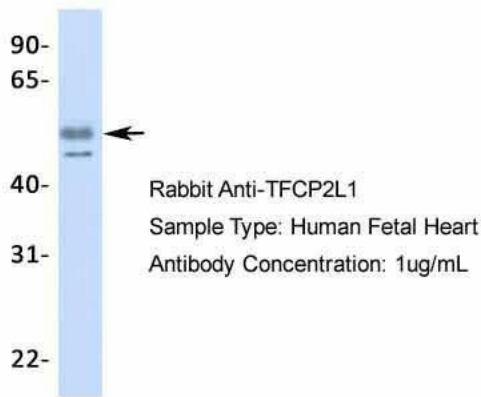
Protein Families: Transcription Factors

**Product images:**



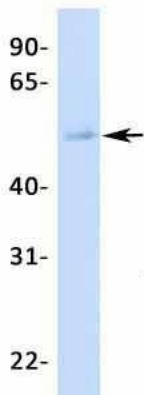
WB Suggested Anti-TFCP2L1 Antibody Titration: 0.2-1 ug/ml; Positive Control: HepG2 cell lysate

**TFCP2L1**



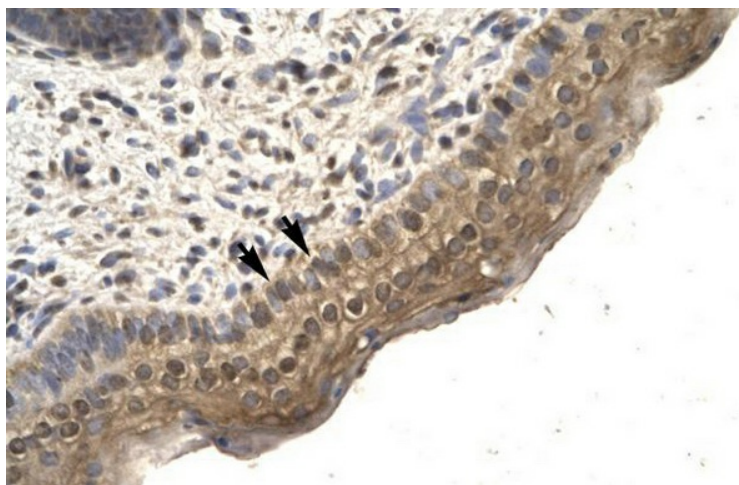
Host: Rabbit; Target Name: TFCP2L1; Sample Tissue: Human Fetal Heart; Antibody Dilution: 1.0ug/ml

# TFCP2L1

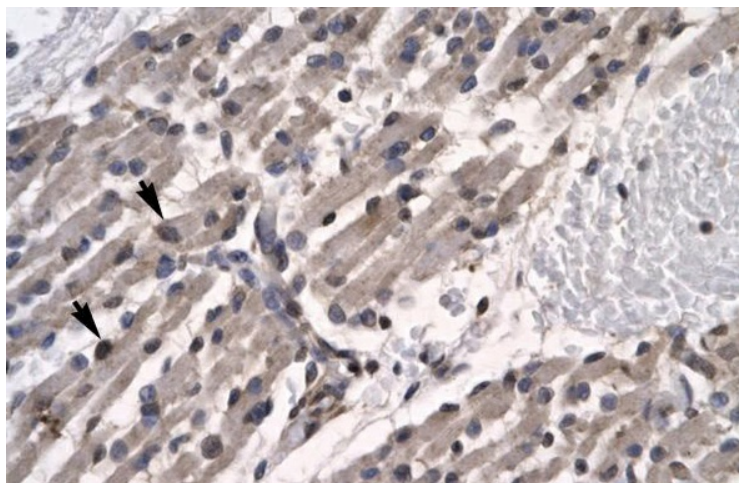


Rabbit Anti-TFCP2L1  
 Sample Type: Human Fetal Lung  
 Antibody Concentration: 1ug/mL

Host: Rabbit; Target Name: TFCP2L1; Sample Tissue: Human Fetal Lung; Antibody Dilution: 1.0ug/ml



Human Spermatophore



Human Muscle