

## Product datasheet for **TA329691**

### Activator of basal transcription 1 (ABT1) Rabbit Polyclonal Antibody

#### Product data:

Product Type:	Primary Antibodies
Applications:	WB
Recommended Dilution:	WB
Reactivity:	Human
Host:	Rabbit
Isotype:	IgG
Clonality:	Polyclonal
Immunogen:	The immunogen for anti-ABT1 antibody: synthetic peptide directed towards the N terminal of human ABT1. Synthetic peptide located within the following region: VGRVFFQAEDRFVRRKKKAAAAGGKKRSYTKDYTEGWVEFRDKRIAKRV
Formulation:	Liquid. Purified antibody supplied in 1x PBS buffer with 0.09% (w/v) sodium azide and 2% sucrose. <i>Note that this product is shipped as lyophilized powder to China customers.</i>
Conjugation:	Unconjugated
Storage:	Store at -20°C as received.
Stability:	Stable for 12 months from date of receipt.
Predicted Protein Size:	32 kDa
Gene Name:	activator of basal transcription 1
Database Link:	<a href="#">NP_037507</a> <a href="#">Entrez Gene 29777 Human</a> <a href="#">Q9ULW3</a>
Background:	Basal transcription of genes by RNA polymerase II requires the interaction of TATA-binding protein (TBP) with the core region of class II promoters. Studies in mouse suggest that the protein encoded by ABT1 likely activates basal transcription from class II promoters by interaction with TBP and the class II promoter DNA. Basal transcription of genes by RNA polymerase II requires the interaction of TATA-binding protein (TBP) with the core region of class II promoters. Studies in mouse suggest that the protein encoded by this gene likely activates basal transcription from class II promoters by interaction with TBP and the class II promoter DNA.



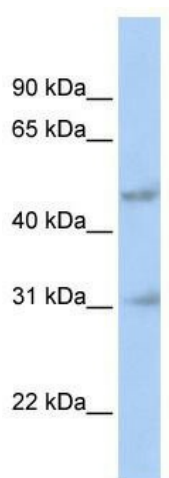
[View online »](#)

Synonyms: hABT1

Note: Immunogen sequence homology: Human: 100%; Bovine: 86%; Dog: 79%; Rabbit: 79%

Protein Families: Transcription Factors

### Product images:



WB Suggested Anti-ABT1 Antibody Titration: 0.2-1 ug/ml; ELISA Titer: 1:12500; Positive Control: 721\_B cell lysate ABT1 is supported by BioGPS gene expression data to be expressed in 721\_B