

Product datasheet for **TA329690**

GTF3C2 Rabbit Polyclonal Antibody

Product data:

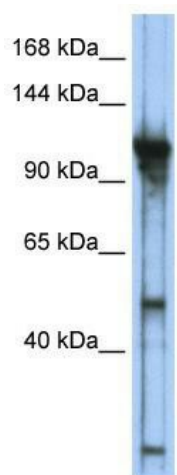
Product Type:	Primary Antibodies
Applications:	WB
Recommended Dilution:	WB
Reactivity:	Human
Host:	Rabbit
Isotype:	IgG
Clonality:	Polyclonal
Immunogen:	The immunogen for anti-GTF3C2 antibody: synthetic peptide directed towards the middle region of human GTF3C2. Synthetic peptide located within the following region: YKADLIPYQDSPEGPDHSSASSGVPNPPKARTYTETVNHYYLLFQDSDLG
Formulation:	Liquid. Purified antibody supplied in 1x PBS buffer with 0.09% (w/v) sodium azide and 2% sucrose. <i>Note that this product is shipped as lyophilized powder to China customers.</i>
Conjugation:	Unconjugated
Storage:	Store at -20°C as received.
Stability:	Stable for 12 months from date of receipt.
Predicted Protein Size:	101 kDa
Gene Name:	general transcription factor IIIC subunit 2
Database Link:	NP_001512 Entrez Gene 2976 Human Q8WUA4
Background:	GTF3C2 is required for RNA polymerase III-mediated transcription. GTF3C2 is a component of TFIIC that initiates transcription complex assembly on tRNA and is required for transcription of 5S rRNA and other stable nuclear and cytoplasmic RNAs. GTF3C2 may play a direct role in stabilizing interactions of TFIIC2 with TFIIC1.
Synonyms:	TFIIC-BETA; TFIIC110
Note:	Immunogen sequence homology: Human: 100%; Dog: 92%; Horse: 92%; Pig: 85%; Rat: 85%; Bovine: 85%; Rabbit: 85%; Guinea pig: 85%; Mouse: 77%



[View online »](#)

Protein Families: Transcription Factors

Product images:



WB Suggested Anti-GTF3C2 Antibody Titration:
0.2-1 ug/ml; ELISA Titer: 1:12500; Positive Control:
Transfected 293T