

Product datasheet for **TA329689**

TFII I (GTF2I) Rabbit Polyclonal Antibody

Product data:

Product Type:	Primary Antibodies
Applications:	IHC, WB
Recommended Dilution:	IHC, WB
Reactivity:	Human
Host:	Rabbit
Isotype:	IgG
Clonality:	Polyclonal
Immunogen:	The immunogen for anti-GTF2I antibody: synthetic peptide directed towards the N terminal of human GTF2I. Synthetic peptide located within the following region: ILSPGGSCGPIKVKTEPTEDSGISLEMAAVTVKEESEDPDYYQYNIQGS
Formulation:	Liquid. Purified antibody supplied in 1x PBS buffer with 0.09% (w/v) sodium azide and 2% sucrose. <i>Note that this product is shipped as lyophilized powder to China customers.</i>
Conjugation:	Unconjugated
Storage:	Store at -20°C as received.
Stability:	Stable for 12 months from date of receipt.
Predicted Protein Size:	108 kDa
Gene Name:	general transcription factor Iii
Database Link:	NP_001509 Entrez Gene 2969 Human P78347
Background:	GTF2I is a multifunctional phosphoprotein with roles in transcription and signal transduction. It is deleted in Williams-Beuren syndrome, a multisystem developmental disorder caused by the deletion of contiguous genes at chromosome 7q11.23. This gene encodes a multifunctional phosphoprotein with roles in transcription and signal transduction. It is deleted in Williams-Beuren syndrome, a multisystem developmental disorder caused by the deletion of contiguous genes at chromosome 7q11.23. The exon(s) encoding 5' UTR has not been fully defined, but this gene is known to contain at least 34 exons, and its alternative splicing generates 4 transcript variants.



[View online »](#)

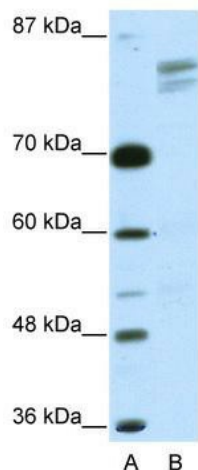
Synonyms: BAP135; BTKAP1; DIWS; GTFII-I; IB291; SPIN; TFII-I; WBS; WBSCR6

Note: Immunogen sequence homology: Dog: 100%; Pig: 100%; Rat: 100%; Horse: 100%; Human: 100%; Mouse: 100%; Bovine: 100%; Rabbit: 100%; Guinea pig: 100%

Protein Families: Transcription Factors

Protein Pathways: Basal transcription factors

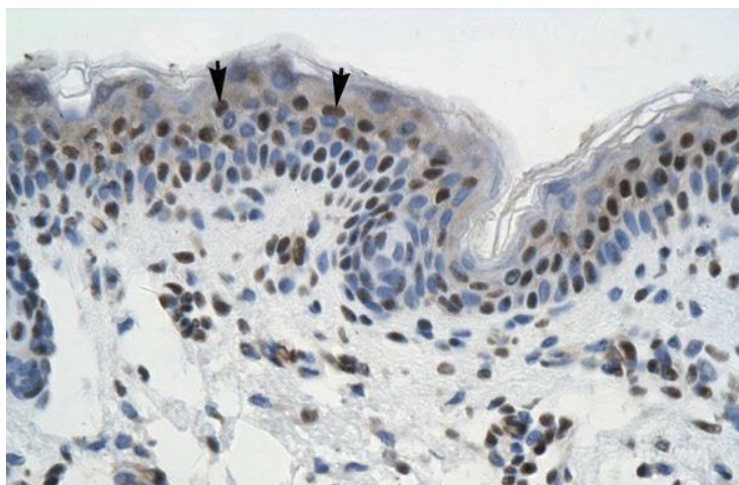
Product images:



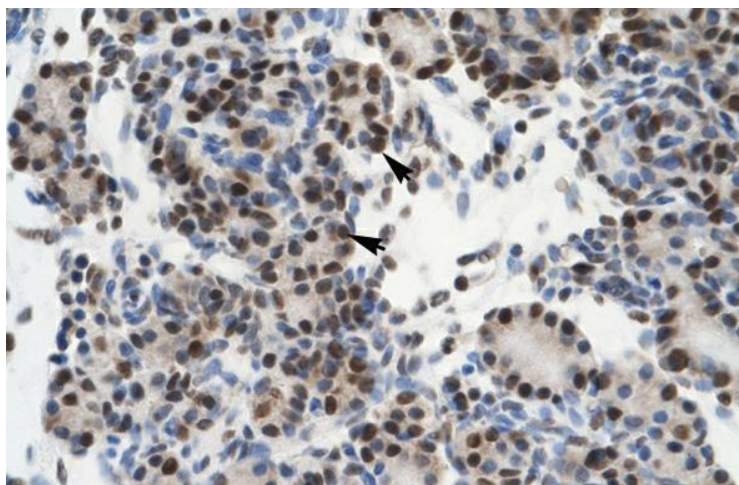
WB Suggested Anti-GTF2I Antibody; Titration: 2.5 ug/ml; Positive Control: HepG2 Whole Cell There is BioGPS gene expression data showing that GTF2I is expressed in HepG2



WB Suggested Anti-GTF2I Antibody Titration: 0.2-1 ug/ml; ELISA Titer: 1:312500; Positive Control: HepG2; There is BioGPS gene expression data showing that GTF2I is expressed in HepG2



Rabbit Anti-GTF21 Antibody; Paraffin Embedded Tissue: Human Skin; Cellular Data: Squamous epithelial cells; Antibody Concentration: 4.0-8.0 ug/ml; Magnification: 400X



Rabbit Anti-GTF21 Antibody; Paraffin Embedded Tissue: Human Pancreas; Cellular Data: Epithelial cells of pancreatic acinus; Antibody Concentration: 4.0-8.0 ug/ml; Magnification: 400X