

Product datasheet for **TA329686**

Metabotropic Glutamate Receptor 6 (GRM6) Rabbit Polyclonal Antibody

Product data:

Product Type:	Primary Antibodies
Applications:	WB
Recommended Dilution:	WB
Reactivity:	Human
Host:	Rabbit
Isotype:	IgG
Clonality:	Polyclonal
Immunogen:	The immunogen for anti-GRM6 antibody: synthetic peptide directed towards the middle region of human GRM6. Synthetic peptide located within the following region: EFWEENFNCKLTSSGTQSDDSTRKCTGEERIGRDSTYEQEGKVQFVIDAV
Formulation:	Liquid. Purified antibody supplied in 1x PBS buffer with 0.09% (w/v) sodium azide and 2% sucrose. <i>Note that this product is shipped as lyophilized powder to China customers.</i>
Conjugation:	Unconjugated
Storage:	Store at -20°C as received.
Stability:	Stable for 12 months from date of receipt.
Predicted Protein Size:	95 kDa
Gene Name:	glutamate metabotropic receptor 6
Database Link:	NP_000834 Entrez Gene 2916 Human O15303



[View online »](#)

Background: GRM6 is the receptor for glutamate. The activity of this receptor is mediated by a G-protein that inhibits adenylate cyclase activity. L-glutamate is the major excitatory neurotransmitter in the central nervous system and activates both ionotropic and metabotropic glutamate receptors. Glutamatergic neurotransmission is involved in most aspects of normal brain function and can be perturbed in many neuropathologic conditions. The metabotropic glutamate receptors are a family of G protein-coupled receptors, that have been divided into 3 groups on the basis of sequence homology, putative signal transduction mechanisms, and pharmacologic properties. Group I includes GRM1 and GRM5 and these receptors have been shown to activate phospholipase C. Group II includes GRM2 and GRM3 while Group III includes GRM4, GRM6, GRM7 and GRM8. Group II and III receptors are linked to the inhibition of the cyclic AMP cascade but differ in their agonist selectivities.

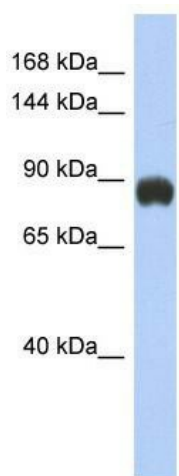
Synonyms: CSNB1B; GPRC1F; mGlu6; MGLUR6

Note: Immunogen sequence homology: Dog: 100%; Horse: 100%; Human: 100%; Pig: 93%; Rat: 93%; Mouse: 93%; Bovine: 93%; Zebrafish: 93%; Rabbit: 87%; Guinea pig: 87%

Protein Families: Druggable Genome, Transmembrane

Protein Pathways: Neuroactive ligand-receptor interaction

Product images:



WB Suggested Anti-GRM6 Antibody Titration: 0.2-1 ug/ml; ELISA Titer: 1:62500; Positive Control: Human Small Intestine