

Product datasheet for **TA329684**

ZC3H7A Rabbit Polyclonal Antibody

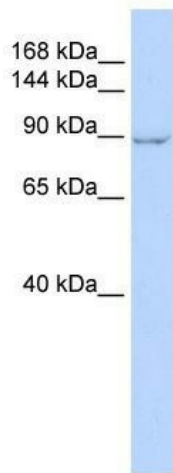
Product data:

Product Type:	Primary Antibodies
Applications:	WB
Recommended Dilution:	WB
Reactivity:	Human
Host:	Rabbit
Isotype:	IgG
Clonality:	Polyclonal
Immunogen:	The immunogen for anti-ZC3H7A antibody: synthetic peptide directed towards the middle region of human ZC3H7A. Synthetic peptide located within the following region: NSFSMSESKRDLSTSTSREGTPLNNSNSSLLLMNGPGSLFASENLFGISS
Formulation:	Liquid. Purified antibody supplied in 1x PBS buffer with 0.09% (w/v) sodium azide and 2% sucrose. <i>Note that this product is shipped as lyophilized powder to China customers.</i>
Conjugation:	Unconjugated
Storage:	Store at -20°C as received.
Stability:	Stable for 12 months from date of receipt.
Predicted Protein Size:	110 kDa
Gene Name:	zinc finger CCCH-type containing 7A
Database Link:	NP_054872 Entrez Gene 29066 Human Q8IWR0
Background:	ZC3H7A contains 1 C2H2-type zinc finger, 3 C3H1-type zinc fingers and 3 TPR repeats. The function of ZC3H7A remains unknown.
Synonyms:	HSPC055; ZC3H7; ZC3HDC7
Note:	Immunogen sequence homology: Human: 100%; Pig: 93%; Rat: 93%; Bovine: 93%; Rabbit: 93%; Guinea pig: 93%; Mouse: 92%; Horse: 86%; Dog: 79%



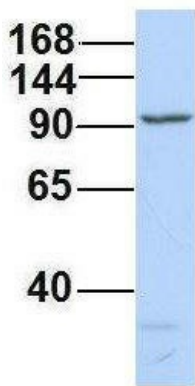
[View online »](#)

Product images:



WB Suggested Anti-ZC3H7A Antibody Titration:
 0.2-1 ug/ml; ELISA Titer: 1:312500; Positive
 Control: HeLa cell lysate ZC3H7A is supported by
 BioGPS gene expression data to be expressed in
 HeLa

ZC3H7A



Rabbit Anti-ZC3H7A
 Sample Type: Human 721_B
 Antibody Concentration: 1ug/mL

Host: Rabbit; Target Name: ZC3H7A; Sample
 Tissue: 721_B; Antibody Dilution: 1.0ug/ml;
 ZC3H7A is supported by BioGPS gene expression
 data to be expressed in 721_B