

## Product datasheet for **TA329683**

### VPS16 Goat Polyclonal Antibody

#### Product data:

Product Type:	Primary Antibodies
Applications:	WB
Recommended Dilution:	WB: 0.1-0.3ug/ml
Reactivity:	Human, Mouse, Rat (Expected from sequence similarity: Dog, Pig, Cow)
Host:	Goat
Isotype:	IgG
Clonality:	Polyclonal
Immunogen:	Peptide with sequence C-KESQKADEYLREIQ, from the internal region of the protein sequence according to NP_072097.2
Formulation:	Supplied at 0.5 mg/ml in Tris saline, 0.02% sodium azide, pH7.3 with 0.5% bovine serum albumin. Aliquot and store at -20°C. Minimize freezing and thawing.
Concentration:	lot specific
Purification:	Purified from goat serum by ammonium sulphate precipitation followed by antigen affinity chromatography using the immunizing peptide.
Conjugation:	Unconjugated
Storage:	Store at -20°C as received.
Stability:	Stable for 12 months from date of receipt.
Gene Name:	VPS16, CORVET/HOPS core subunit
Database Link:	<a href="#">NP_536338</a> <a href="#">Entrez Gene 80743 Mouse</a> <a href="#">Entrez Gene 296159 Rat</a> <a href="#">Entrez Gene 100856310 Dog</a> <a href="#">Entrez Gene 64601 Human</a> <a href="#">Q9H269</a>



[View online »](#)

**Background:**

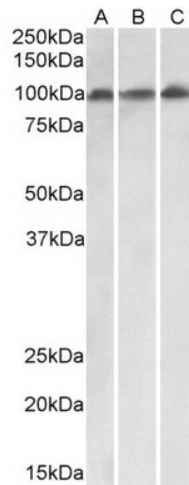
Vesicle mediated protein sorting plays an important role in segregation of intracellular molecules into distinct organelles. Genetic studies in yeast have identified more than 40 vacuolar protein sorting (VPS) genes involved in vesicle transport to vacuoles. This gene encodes the human homolog of yeast class C Vps16 protein. The mammalian class C Vps proteins are predominantly associated with late endosomes/lysosomes, and like their yeast counterparts, may mediate vesicle trafficking steps in the endosome/lysosome pathway. Two transcript variants encoding different isoforms have been found for this gene. [provided by RefSeq, Jul 2009]

**Synonyms:**

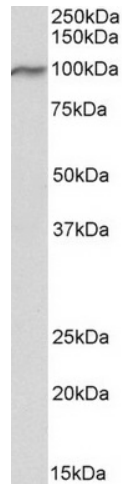
hVPS16

**Protein Families:**

Druggable Genome

**Product images:**


TA329683 (0.1ug/ml) staining of HeLa (A), HepG2 (B) and Jurkat (C) lysates (35ug protein in RIPA buffer). Primary incubation was 1 hour. Detected by chemiluminescence



TA329683 (0.1ug/ml) staining of Mouse Spleen lysate (35ug protein in RIPA buffer). Primary incubation was 1 hour. Detected by chemiluminescence.