

## Product datasheet for **TA329681**

### SRCAP Goat Polyclonal Antibody

#### Product data:

Product Type:	Primary Antibodies
Applications:	IHC
Recommended Dilution:	IHC: 5-10ug/ml
Reactivity:	Human (Expected from sequence similarity: Mouse, Rat, Dog, Pig)
Host:	Goat
Isotype:	IgG
Clonality:	Polyclonal
Immunogen:	Peptide with sequence C-QEGNDAEAQRREIE, from the internal region (near N Trminus) of the protein sequence according to NP_006653.2
Formulation:	Supplied at 0.5 mg/ml in Tris saline, 0.02% sodium azide, pH7.3 with 0.5% bovine serum albumin. Aliquot and store at -20°C. Minimize freezing and thawing.
Concentration:	lot specific
Purification:	Purified from goat serum by ammonium sulphate precipitation followed by antigen affinity chromatography using the immunizing peptide.
Conjugation:	Unconjugated
Storage:	Store at -20°C as received.
Stability:	Stable for 12 months from date of receipt.
Gene Name:	Snf2-related CREBBP activator protein
Database Link:	<a href="#">NP_006653</a> <a href="#">Entrez Gene 100043597 Mouse</a> <a href="#">Entrez Gene 361652 Rat</a> <a href="#">Entrez Gene 479773 Dog</a> <a href="#">Entrez Gene 10847 Human</a> <a href="#">Q6ZRS2</a>

**Background:** This gene encodes the core catalytic component of the multiprotein chromatin-remodeling SRCAP complex. The encoded protein is an ATPase that is necessary for the incorporation of the histone variant H2A.Z into nucleosomes. It can function as a transcriptional activator in Notch-mediated, CREB-mediated and steroid receptor-mediated transcription. Mutations in this gene cause Floating-Harbor syndrome, a rare disorder characterized by short stature, language deficits and dysmorphic facial features. [provided by RefSeq, Feb 2012]

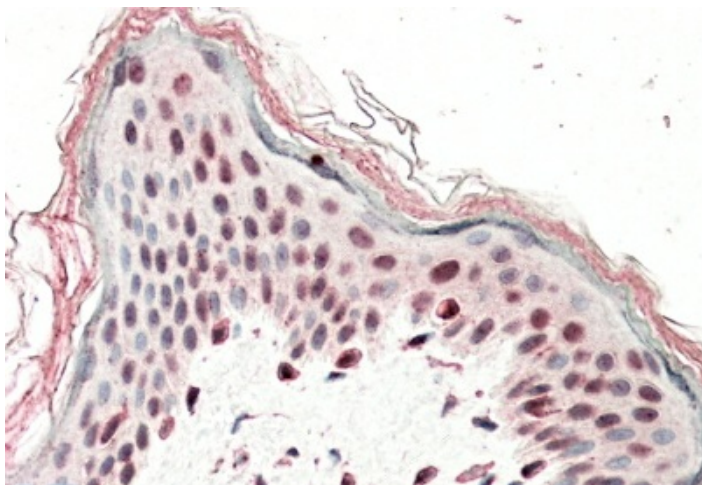


[View online »](#)

**Synonyms:** DOMO1; EAF1; FLHS; SWR1

**Note:** IHC: In paraffin embedded Human Skin shows nuclear staining in some keratinocytes.

**Product images:**



TA329681 (5ug/ml) staining of paraffin embedded Human Skin. Steamed antigen retrieval with citrate buffer pH 6, AP-staining.