

## Product datasheet for **TA329678**

### Apolipoprotein H (APOH) Goat Polyclonal Antibody

#### Product data:

Product Type:	Primary Antibodies
Applications:	WB
Recommended Dilution:	WB: 1-3ug/ml
Reactivity:	Human (Expected from sequence similarity: Dog)
Host:	Goat
Isotype:	IgG
Clonality:	Polyclonal
Immunogen:	Peptide with sequence C-QGERVKIQEKFKN, from the internal region of the protein sequence according to NP_000033.2
Formulation:	Supplied at 0.5 mg/ml in Tris saline, 0.02% sodium azide, pH7.3 with 0.5% bovine serum albumin. Aliquot and store at -20°C. Minimize freezing and thawing.
Concentration:	lot specific
Purification:	Purified from goat serum by ammonium sulphate precipitation followed by antigen affinity chromatography using the immunizing peptide.
Conjugation:	Unconjugated
Storage:	Store at -20°C as received.
Stability:	Stable for 12 months from date of receipt.
Gene Name:	apolipoprotein H
Database Link:	<a href="#">NP_000033</a> <a href="#">Entrez Gene 403945 Dog</a> <a href="#">Entrez Gene 350 Human</a> <a href="#">P02749</a>
Background:	Apolipoprotein H has been implicated in a variety of physiologic pathways including lipoprotein metabolism, coagulation, and the production of antiphospholipid autoantibodies. APOH may be a required cofactor for anionic phospholipid binding by the antiphospholipid autoantibodies found in sera of many patients with lupus and primary antiphospholipid syndrome, but it does not seem to be required for the reactivity of antiphospholipid autoantibodies associated with infections. [provided by RefSeq, Jul]
Synonyms:	B2G1; B2GP1; BG

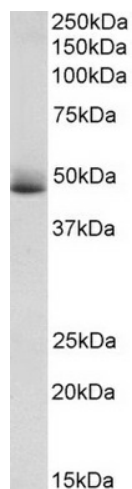


[View online »](#)

**Note:** Approx 48kDa band observed in Human Albumin-depleted Plasma lysates (calculated MW of 38.3kDa according to NP\_000033.2). The observed molecular weight corresponds to earlier findings in literature with different antibodies (Gambino, J Lipid Res. 1996 Apr)

**Protein Families:** Druggable Genome, Secreted Protein

**Product images:**



TA329678 (1ug/ml) staining of Human Albumin-depleted Plasma lysate (35ug protein in RIPA buffer). Primary incubation was 1 hour. Detected by chemiluminescence.