

Product datasheet for **TA329675**

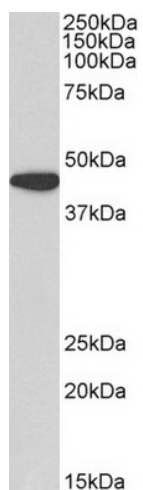
AMACR Goat Polyclonal Antibody

Product data:

Product Type:	Primary Antibodies
Applications:	WB
Recommended Dilution:	WB: 0.1-0.3ug/ml
Reactivity:	Human
Host:	Goat
Isotype:	IgG
Clonality:	Polyclonal
Immunogen:	Peptide with sequence C-RGSFITSEEQDVSPR, from the internal region of the protein sequence according to NP_055139.4; NP_001161067.1
Formulation:	Supplied at 0.5 mg/ml in Tris saline, 0.02% sodium azide, pH7.3 with 0.5% bovine serum albumin. Aliquot and store at -20°C. Minimize freezing and thawing.
Concentration:	lot specific
Purification:	Purified from goat serum by ammonium sulphate precipitation followed by antigen affinity chromatography using the immunizing peptide.
Conjugation:	Unconjugated
Storage:	Store at -20°C as received.
Stability:	Stable for 12 months from date of receipt.
Gene Name:	alpha-methylacyl-CoA racemase
Database Link:	NP_976316 Entrez Gene 23600 Human Q9UHK6
Synonyms:	AMACRD; CBAS4; RACE; RM
Note:	This antibody is expected to recognize isoform 1 (NP_055139.4) and isoform 3 (NP_001161067.1).
Protein Families:	Druggable Genome
Protein Pathways:	Metabolic pathways, Primary bile acid biosynthesis



[View online »](#)

Product images:

TA329675 (0.1ug/ml) staining of Human Kidney lysate (35ug protein in RIPA buffer). Primary incubation was 1 hour. Detected by chemiluminescence.